

Link-Belt
EXCAVATORS

370 X4S

SPEC SHEET (PRELIMINARY)



370 X4S SPECIFICATIONS

SAE Net Horsepower
268 hp (200 kW)

Operating Weight
83,776 lbs (38,000 kg)

Swing Torque
82,600 lbf-ft (112.0 kNm)



ENGINE

Engine	Isuzu AQ-6HK1X Final Tier 4 turbocharged diesel engine
SAE J 1349 net horsepower	268 HP (200 kW) @ 1900 min-1 (rpm)
Displacement	475 cu in (7.79 L)
Maximum Torque	729 lbf-ft (988 N-m) @ 1500 min-1 (rpm)
Starter	24 V - 5.0 kW
Alternator	90 amp
Voltage	24 V

HYDRAULIC SYSTEM

Hydraulic Pumps

Pump Output	2 x 79.5 gpm (301 L/min)
Pilot Pump Maximum Flow	7.5 gpm (28.5 L/min)

Relief Valve Settings

Boom Up / Arm / Bucket in Power Boost	4,970 psi (34.3 MPa) 5,410 psi (37.3 MPa)
Swing Circuit	4,410 psi (30.4 MPa)
Travel Circuit	4,970 psi (34.3 MPa)

Hydraulic Cylinders

Number of Cylinders - Bore x Stroke

Boom	2 - 5.7" x 58.9" (145 mm x 1495 mm)
Arm	6.7" x 68.8" (170 mm x 1748 mm)
Bucket	5.9" x 47.6" (150 mm x 1210 mm)

SWING

Swing Speed	9.7 rpm
Tail Swing	11' 9" (3.58 m)
Swing Torque	82,600 lbf-ft (112.0 kNm)

370 X4S SPECIFICATIONS

UNDERCARRIAGE

Carrier Rollers	2 per Side
Track Rollers	8 per Side
Track Link Pitch	8.5" (216 mm)
Shoes	48 per Side
Shoe Width	31.5" (800 mm)
Ground Pressure	7.7 psi (0.053 MPa)

TRAVEL SYSTEM

Travel Speeds	2.1 - 3.5 mph (3.3 - 5.6 km/h)
Drawbar Pull	61,100 lbf (272 kN)
Gradeability	70% (35°)

ATTACHMENT

HD Boom	21' 2" (6.45 m)
Available Arms	Digging Force
10' 8" (3.25 m)	36,980 lbf (164.5 kN)
with Auto Power Boost	40,200 lbf (178.8 kN)
8' 8" (2.63 m) HD	43,770 lbf (194.7 kN)
with Auto Power Boost	47,590 lbf (211.7 kN)
13' 3" (4.04 m)	31,470 lbf (140.0 kN)
with Auto Power Boost	34,220 lbf (152.2 kN)
10' 8" (3.25 m) HD	36,980 lbf (164.5 kN)
with Auto Power Boost	40,200 lbf (178.8 kN)
Bucket Digging Force	51,640 lbf (229.7 kN)
with Auto Power Boost	56,160 lbf (249.8 kN)

LUBRICANT AND COOLANT CAPACITY

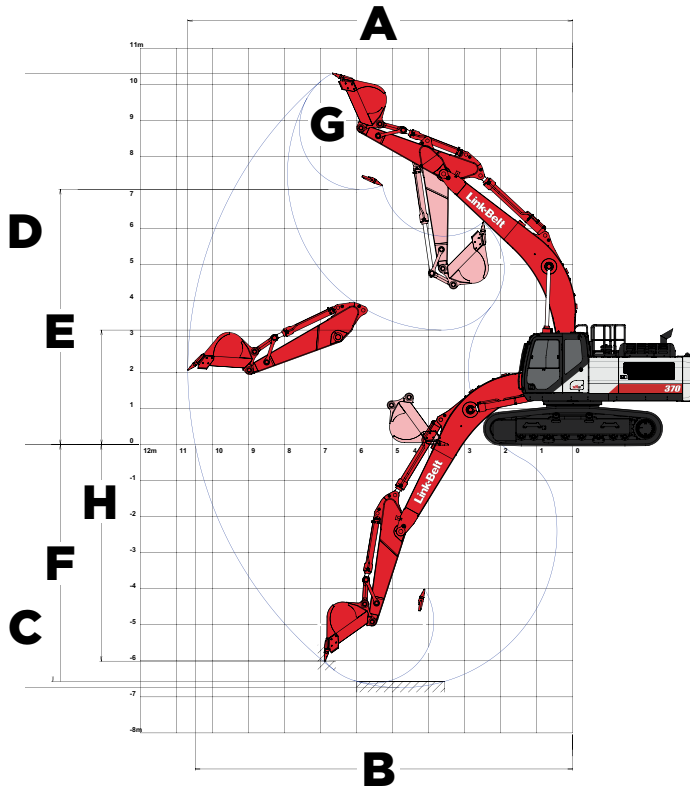
Fuel Tank	153 Gallons (580 Liters)
Hydraulic System	94 Gallons (355 Liters)
Hydraulic Tank	49 Gallons (186 Liters)
Final Drive (per side)	1.7 Gallons (6.5 Liters)
Swing Drive	1.3 Gallons (5.0 Liters)
Engine Oil	12.9 Gallons (48.7 Liters)
DEF Tank	22 Gallons (84 Liters)
Coolant System	10.5 Gallons (39.8 Liters)

OPERATING WEIGHT

Working weight with 31.5" (800 mm) shoes, 21' 2" (6.45 m) HD boom, 10' 8" (3.25 m) arm, 2,601 lbs (1,180 kg) bucket, 15,900 lbs (7,200 kg) counterweight	83,776 lbs (38,000 kg)
----------------------------------------------------------------------------------------------------------------------------------------------------------	------------------------

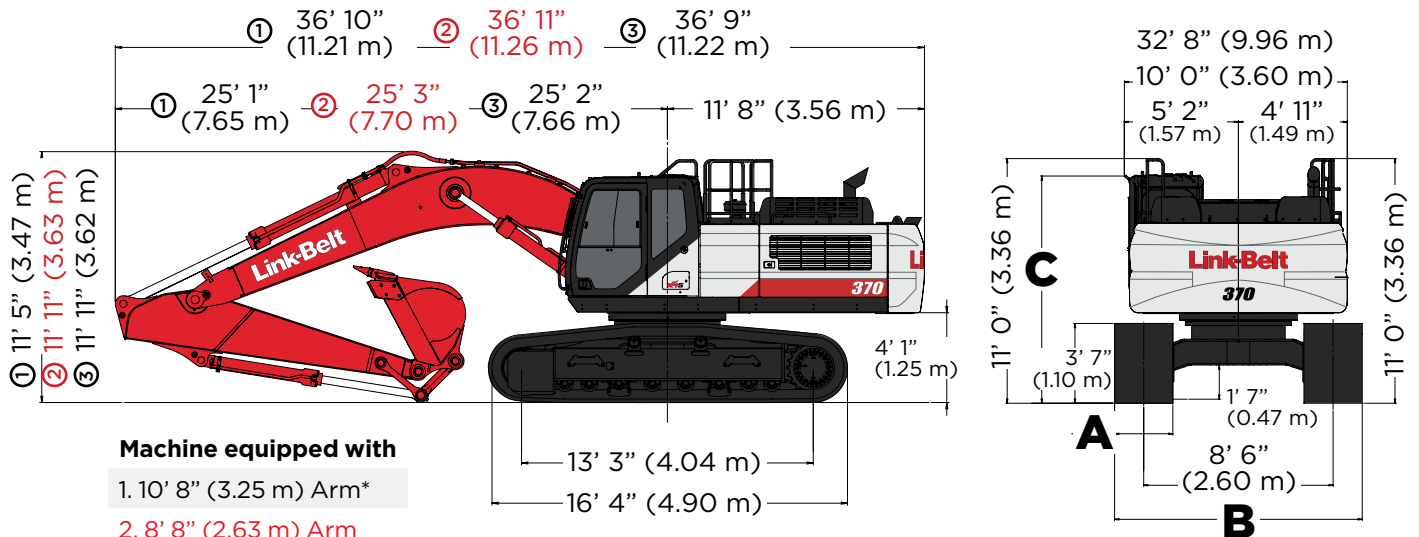
370 X4S SPECIFICATIONS

WORKING RANGE



Machine Equipped with 21' 2" (6.45 m) Boom	Arm 10' 8" (3.25 m)*	Arm 8' 8" (2.63 m)	Arm 13' 3" (4.04 m)
A. Maximum reach	36' 9" (11.20 m)	35' 1" (10.68 m)	39' 1" (11.92 m)
B. Maximum reach @ ground level	36' 1" (11.00 m)	34' 5" (10.48 m)	38' 6" (11.74 m)
C. Maximum dig depth	24' 2" (7.36 m)	22' 1" (6.74 m)	26' 9" (8.16 m)
D. Maximum dig height	34' 1" (10.39 m)	33' 10" (10.30 m)	35' 0" (10.66 m)
E. Maximum dump height	23' 8" (7.22 m)	23' 3" (7.08 m)	24' 3" (7.51 m)
F. Digging depth 8' (2.44 m) level bottom	23' 8" (7.21 m)	21' 7" (6.57 m)	26' 8" (8.03 m)
G. Bucket rotation	173°	173°	173°
H. Maximum vertical wall depth	20' 11" (6.37 m)	19' 9" (6.01 m)	23' 1" (7.05 m)

TRAVEL DIMENSIONS



Machine equipped with

1. 10' 8" (3.25 m) Arm*

2. 8' 8" (2.63 m) Arm

3. 13' 3" (4.04 m) Arm

Undercarriage	STD	OPTION
A. Shoe Width	31.5" (800 mm)	27.5" (700 mm)
B. Overall Width	11' 2" (3.40 m)	10' 10" (3.30 m)

Cab Specification

STD. (No Equipment)

With Head Guard

With Vandal Cover

With Head Guard & Vandal Cover

C: Cab Height

10' 4" (3.15 m)

10' 9" (3.27 m)



10' 8" (3.26 m)

11' 0" (3.35 m)



370 X4S SPECIFICATIONS

LIFT CAPACITIES - RADIUS OF LOAD*

10' 8" (3.25 M) ARM WITH 21' 2" (6.45 M) HD BOOM WITH POWER-BOOST APPLIED

				5' 0" (1.5 m)		10' 0" (3.0 m)		15' 0" (4.5 m)		20' 0" (6.0 m)		25' 0" (7.5 m)		30' 0" (9.0 m)		Cap at Max. Reach	
End	Side	End	Side	End	Side	End	Side	End	Side	End	Side	End	Side	End	Side	End	Side
30' 0" (9.0m)	lbs kg																
25' 0" (7.5m)	lbs kg											15,450*	15,450*			14,700*	14,700*
20' 0" (6.0m)	lbs kg											19,250*	17,600			14,100*	14,100*
15' 0" (4.5m)	lbs kg									23,250*	23,250*	20,450*	17,100	14,200*	12,800	14,050*	12,800
10' 0" (3.0m)	lbs kg							35,650*	34,250	26,550*	22,650	22,100*	16,450	18,700	12,550	14,500*	11,900
5' 0" (1.5m)	lbs kg							40,900*	32,050	29,500*	21,500	23,700*	15,850	18,350	12,250	15,400*	11,600
Ground Line	lbs kg							42,600*	31,050	31,150*	20,750	23,500	15,350	18,100	12,000	17,050*	11,850
-5' 0" (-2.0m)	lbs kg					31,700*	31,700*	41,550*	30,800	31,150*	20,400	23,250	15,150			19,150	12,650
-10' 0" (-3.5m)	lbs kg					50,400*	50,400*	38,050*	31,050	29,000*	20,500	22,250*	15,250			20,550*	14,450
-15' 0" (-5.0m)	lbs kg					40,900*	40,900*	31,250*	31,250*	23,500*	21,050					19,950*	18,500
-20' 0" (-6.0m)	lbs kg																

8' 8" (2.63 M) HD ARM WITH 21' 2" (6.45 M) HD BOOM WITH POWER-BOOST APPLIED

				5' 0" (1.5 m)		10' 0" (3.0 m)		15' 0" (4.5 m)		20' 0" (6.0 m)		25' 0" (7.5 m)		30' 0" (9.0 m)		Cap at Max. Reach	
End	Side	End	Side	End	Side	End	Side	End	Side	End	Side	End	Side	End	Side	End	Side
30' 0" (9.0m)	lbs kg																
25' 0" (7.5m)	lbs kg															21,050*	19,700
20' 0" (6.0m)	lbs kg									22,300*	22,300*	20,750*	17,150			19,900*	15,750
15' 0" (4.5m)	lbs kg							31,400*	31,400*	24,800*	23,350	21,550*	16,700			19,800*	13,750
10' 0" (3.0m)	lbs kg							38,200*	33,000	27,850*	22,100	22,950*	16,150			19,150	12,750
5' 0" (1.5m)	lbs kg							37,800*	31,250	30,300*	21,100	23,750	15,550			18,750	12,450
Ground Line	lbs kg							42,150*	30,700	31,250*	20,500	23,300	15,200			19,300	12,750
-5' 0" (-2.0m)	lbs kg					29,650*	29,650*	39,900*	30,700	30,450*	20,300	23,250	15,150			21,000	13,800
-10' 0" (-3.5m)	lbs kg					44,850*	44,850*	35,300*	31,150	27,250*	20,550					21,050*	16,200
-15' 0" (-5.0m)	lbs kg							26,700*	26,700*							19,200*	19,200*
-20' 0" (-6.0m)	lbs kg															8,790*	8,790*

NOTES: EXCAVATOR LIFTING CAPACITIES

- The lift capacities above are based on the ISO standard, ISO 10567:2007 - "Earthmoving Machinery - Hydraulic Excavators - Lift Capacity"
- Lifting capacities shown should not be exceeded. The weight of all lifting accessories must be deducted from the above lifting capacities. The use of a work tool attachment point as the lift point could affect the machine lift performance.
- Lifting capacities are based on the machine standing on a firm, uniform supporting surface. Users must make allowances for job conditions such as soft or uneven ground.
- Lifting capacities shown do not exceed 75% of the minimum tipping loads or 87% of the hydraulic capacities. Lifting capacities marked with an asterisk (*) are limited by hydraulic capacities.
- The least stable position is lifting over the side.
- Operators should be fully acquainted with the Operator's Manual & Operating Safety Booklet, furnished by LBX Company LLC before operating the machine.
- Lift capacities apply only to the machine as originally manufactured and normally equipped by LBX Company LLC.
- This lift chart is without bucket.

370 X4S SPECIFICATIONS

LIFT CAPACITIES - RADIUS OF LOAD*

13' 3" (4.04 M) ARM WITH 21' 2" (6.45 M) HD BOOM WITH POWER-BOOST APPLIED

		5' 0" (1.5 m)		10' 0" (3.0 m)		15' 0" (4.5 m)		20' 0" (6.0 m)		25' 0" (7.5 m)		30' 0" (9.0 m)		Cap at Max. Reach	
End	Side	End	Side	End	Side	End	Side	End	Side	End	Side	End	Side	End	Side
30' 0" (9.0m)	lbs kg													11,750*	11,750*
25' 0" (7.5m)	lbs kg													10,850*	10,850*
20' 0" (6.0m)	lbs kg									17,000*	17,000*	13,100*	13,050	10,500*	10,500*
15' 0" (4.5m)	lbs kg									18,350*	17,200	17,150*	12,800	10,450*	10,450*
10' 0" (3.0m)	lbs kg					31,250*	31,250*	24,000*	22,900	20,250*	16,450	18,100*	12,450	10,750*	10,450
5' 0" (1.5m)	lbs kg					37,700*	32,450	27,400*	21,550	22,150*	15,700	18,150	12,000	11,400*	10,150
Ground Line	lbs kg			20,600*	20,600*	41,150*	30,800	29,800*	20,500	23,250	15,050	17,800	11,650	12,450*	10,300
-5' 0" (-2.0m)	lbs kg	19,600*	19,600*	30,200*	30,200*	41,650*	30,100	30,700*	19,950	22,800	14,700	17,600	11,500	14,150*	10,850
-10' 0" (-3.5m)	lbs kg	30,600*	30,600*	43,100*	43,100*	39,650*	30,100	29,750*	19,800	22,700	14,600			17,100*	12,150
-15' 0" (-5.0m)	lbs kg	43,700*	43,700*	48,050*	48,050*	34,800*	30,550	26,350*	20,100	19,400*	15,000			18,900*	14,750
-20' 0" (-6.0m)	lbs kg					25,350*	25,350*							17,700*	17,700*

10' 8" (3.25 M) HD ARM WITH 21' 2" (6.45 M) HD BOOM WITH POWER-BOOST APPLIED

		10' 0" (3.0 m)		15' 0" (4.5 m)		20' 0" (6.0 m)		25' 0" (7.5 m)		30' 0" (9.0 m)		35' 0" (10.5 m)		Cap at Max. Reach	
End	Side	End	Side	End	Side	End	Side	End	Side	End	Side	End	Side	End	Side
30' 0" (9.0m)	lbs kg														
25' 0" (7.5m)	lbs kg									15,300*	15,300*			14,550*	14,550*
20' 0" (6.0m)	lbs kg									18,900*	17,300			13,950*	13,950*
15' 0" (4.5m)	lbs kg							22,850*	22,850*	20,050*	16,800	14,050*	12,500	13,900*	12,500
10' 0" (3.0m)	lbs kg					35,150*	33,800	26,150*	22,300	21,700*	16,150	18,400	12,250	14,350*	11,600
5' 0" (1.5m)	lbs kg					40,300*	31,500	29,050*	21,100	23,250*	15,500	18,050	11,900	15,250*	11,300
Ground Line	lbs kg					42,000*	30,450	30,650*	20,300	23,150	15,000	17,800	11,700	16,850*	11,500
-5' 0" (-2.0m)	lbs kg			31,500*	31,500*	40,950*	30,250	30,650*	20,000	22,900	14,800			18,800	12,300
-10' 0" (-3.5m)	lbs kg			50,250*	50,250*	37,450*	30,500	28,550*	20,050	21,800*	14,900			20,150*	14,150
-15' 0" (-5.0m)	lbs kg			40,200*	40,200*	30,700*	30,700*	23,050*	20,650					19,550*	18,150
-20' 0" (-6.0m)	lbs kg													8,865*	8,230

NOTES: EXCAVATOR LIFTING CAPACITIES

- The lift capacities above are based on the ISO standard, ISO 10567:2007 - "Earthmoving Machinery - Hydraulic Excavators - Lift Capacity"
- Lifting capacities shown should not be exceeded. The weight of all lifting accessories must be deducted from the above lifting capacities. The use of a work tool attachment point as the lift point could affect the machine lift performance.
- Lifting capacities are based on the machine standing on a firm, uniform supporting surface. Users must make allowances for job conditions such as soft or uneven ground.
- Lifting capacities shown do not exceed 75% of the minimum tipping loads or 87% of the hydraulic capacities. Lifting capacities marked with an asterisk (*) are limited by hydraulic capacities.
- The least stable position is lifting over the side.
- Operators should be fully acquainted with the Operator's Manual & Operating Safety Booklet, furnished by LBX Company LLC before operating the machine.
- Lift capacities apply only to the machine as originally manufactured and normally equipped by LBX Company LLC.
- This lift chart is without bucket.

370 X4S SPECIFICATIONS

STANDARD EQUIPMENT

ADVANCED TECHNOLOGY

- Digital Level
- Dynamic Stability Assist
- Height and Depth Alarm
- Payload

CAB

- 270° WAVES 3-Camera System
- 12V Power Outlet
- AM/FM Sound System
- Anti-Theft Device
- Auxiliary Switches on Control Lever
- Bluetooth
- Cab Air Filter - External
- Cab Handrails
- Cab Interior Light
- Cab ISO-Mounts
- LED Cab Lights
- Clear Roof Window
- Climate Control A/C and Heater
- Cup Holder (2)
- Defroster
- Digital Clock
- Emergency Exit and Hammer
- Face Vent
- Floor Mat (Split)
- Front Window One-Touch Lock
- Gate Lock Hydraulic Activation
- Horn
- Hour Meter (Digital)
- LCD 10" Color Monitor
- Maintenance Interval Reminders
- MP3 Auxiliary Input
- On-Board Diagnostic
- Radio Mute Switch
- Rear View Camera
- Rear View Mirrors (2)
- RemoteCARE Support System (GPS)

- Roof Sun Shade
- ROPS/FOPS Level 1 Certified Structure
- Safety Glass Windows
- SCM Air-Suspension Seat with Tilt & Heater
- Seat Recline
- Selectable Monitor Languages
- Side View Cameras (2)
- Smart Phone Tray
- Travel Alarm with Cancel Switch
- Trip Meter (Digital)
- Wiper & Washer
- Wiper Switch on RH Joystick

ENGINE

- 90A Alternator
- Air Filter (Double Element)
- Air Filter Restriction Indicator
- Air Pre-Cleaner
- Auto Warm-Up System
- Auto-Idle
- Auto-Idle Shutdown
- Battery Disconnect Switch w/ LED Light
- Cooling Fan
- DEF Gauge on Monitor
- Diesel Oxidation Catalyst (DOC)
- Drain for Fuel Tank
- Dual Remote Fuel Filters with Water Separators
- EGR Coolers
- Emergency Engine Stop
- Engine Oil Sample Port
- Engine Protection Feature
- External Fuel Gauge
- External DEF Gauge
- Fan Housing
- Fuel Cooler
- Fuel Filter Restriction Indicator
- Fuel Management System

- Fuel Usage History
- Fuel Usage Monitor
- Glow Plug Pre-Heat
- Idle-Start
- Intercooler
- Neutral Start
- One-Touch Idle
- Radiator / Oil Cooler / Intercooler Protective Screens
- Remote Engine Oil Drain
- Remote Oil Filter
- Selective Catalytic Reduction (SCR)
- Variable Geometry Turbocharger

HYDRAULICS

- Anti-drift valves (Arm & Boom)
- Arm Regeneration
- Arm Speed Assistance (2 Pump Flow)
- Attachment Cushion Valve
- Auto Swing Priority
- Custom Flow Control
- Auxiliary Tool Settings (Custom Naming)
- Auxiliary Valve
- Boom Regeneration
- Boom Speed Assistance (2 Pump Flow)
- Bucket Curl Assist
- Control Levers Pre-Wired for Auxiliary Hyd.
- Pattern Control Valve (2 way)
- Electronically Controlled Hydraulic Pumps
- Fire Wall
- Free Swing
- Hydraulic Filter Restriction Indicator
- Hydraulic Oil Sample Port
- Long Life Hydraulic Oil (5,000 Hour)

- Neutral Pump De-Stroke
- Oil Cooler
- Power Boost
- Power Save
- Pressure Reading on Monitor
- Pump Stand-By Pressure

UNDERCARRIAGE

- 800 mm shoes (31.5 in) 3-Bar Steel
- Extended Steps
- Lashing Points (Tie-Downs)
- Sealed Link Chain
- Single Track Guide
- Strutted Track Chain
- Swivel Guard

UPPERSTRUCTURE

- Counterweight (15,900 lbs)
- Center Cover (Over Main CV)
- Fuel Tank Belly Pan
- ISO Guard Rails
- LED Tool Box Light
- Lockable Fuel Cap and Service Doors
- Lockable Hydraulic Oil Tank Cap
- Lockable Engine Hood
- Lockable Tool Box

ATTACHMENT

- 10' 8" (3.25 m) Arm
- 21' 2" (6.45 m) HD Boom
- Auxiliary Pipe Brackets
- Chrome Pins
- HD Bucket Linkage
- LED Boom Light
- Quick Coupler Lines
- Precision Grade Brackets
- Teardrop Pin Retention Keepers

370 X4S SPECIFICATIONS

OPTIONAL EQUIPMENT

CAB

- 270° WAVES+ 3-Camera System
- Cab Sun Visor (Front)
- CAB Head Guard (FOPS Level 2)
- Front Guard (Mesh)
- Front Guard (BAR - OPG Level 1)
- Front Guard (BAR - OPG Level 2)
- LED Lights for WAVES Cameras (4)
- Rain Deflector
- Vandal Cover (DIA Kit)

PRECISION GRADE

- 2D Machine Control
- 2D Machine Guidance

ENGINE

- Reversible Cooling Fan

HYDRAULICS

- Hose Burst Check Valve

AUXILIARY HYDRAULIC OPTIONS

- Multi-Function Aux. w/ in-cab Pressure Settings and RH Proportional Joystick

- Combination Aux. w/ in-cab Pressure Settings and LH/RH Proportional Joystick

UNDERCARRIAGE

- 700 mm shoes (27.5 in) 3-Bar Steel
- Full Length Guards

ATTACHMENT

- 8' 8" (2.63 m) HD Arm
- 13' 3" (4.04 m) Arm
- 10' 8" (3.25 m) HD Arm

BUCKET SIZES



Scan the QR code to find the right size bucket, thumb, and coupler combination for the 370 X4S.

Or visit qrco.de/bfJEug



#LBX2527 · 1/25

LBX® and Link-Belt® are registered trademarks. Copyright 2025. All rights reserved. We are constantly improving our products and therefore reserve the right to change designs and specifications.

Link-Belt
EXCAVATORS