



# 4040B

## ROAD BUILDER - PRELIMINARY SPEC SHEET

### TECH SPECIFICATIONS

#### Engine

Isuzu AQ-6HK1X  
 Horsepower (SAE J 1349, ISO 9249) ..... 207hp (154 kW)  
 Displacement ..... 475 cu in (7790 cc)  
 Maximum Torque (SAE J 1349, ISO 9249) ..... 626 lbf-ft (849 N-m)  
 Starter ..... 24V-5.0kW  
 Alternator ..... 90 amp  
 Voltage ..... 24V

#### Hydraulic System

##### Hydraulic Pumps

Main pumps - 2 variable displacement axial piston pumps with regulating system  
 Max. Oil Flow ..... 2 x 64.2 gpm (2 x 243 L/min)  
 Working Circuit Pressure  
 Boom/Arm/Bucket ..... 4970 psi (34.3 MPa)  
 Swing Circuit ..... 4410 psi (30.4 MPa)  
 Travel Circuit ..... 4970 psi (34.3 MPa)

##### Pilot Pump - 1 Gear Pump

Max. Oil Flow ..... 7.1 gpm (27.0 L/min)  
 Working Circuit Pressure ..... 570 psi (3.9 MPa)

##### Aux. Pump - 1 Gear pump

Max. Oil Flow ..... 9.7 gpm (36.8 L/min)  
 Working Circuit Pressure ..... 2990 psi (20.6 MPa)

##### Hydraulic Cylinders - NO. of Cylinders - Bore X Rod Diameter X Stroke

Boom	2 - 5.51" (140 mm)	X 3.74" (95 mm)	X 53.90" (1369 mm)
Arm	1 - 5.91" (150 mm)	X 4.13" (105 mm)	X 61.77" (1569 mm)
Bucket	1 - 5.31" (135 mm)	X 3.54" (90 mm)	X 42.44" (1078 mm)

#### Swing

Maximum Swing Speed ..... 0-8.5 rpm  
 Swing Torque ..... 82,700 lbf-ft (112,000 N-m)

#### Undercarriage

Carrier Rollers ..... 2 per side  
 Track Rollers ..... 8 per side  
 Link Pitch ..... 8.50" (216mm)  
 Shoes ..... 48 per side  
 Shoe Width ..... 27.5" (700mm)  
 Ground Pressure ..... 9.43 psi (0.064 MPa)

#### Travel System

Travel Speeds ..... 1.5-2.5 mph (2.4-4.0 km/h)  
 Drawbar Pull ..... 69,600 lbf (310 kN)  
 Gradeability ..... 70% (35°)

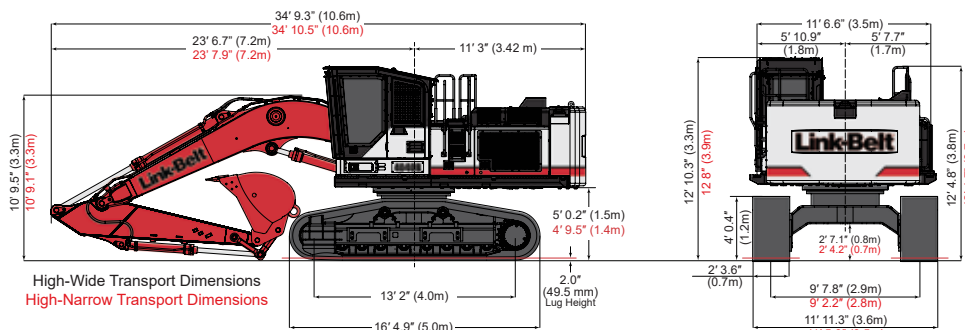
#### Lubricant and Coolant Capacity

Fuel Tank ..... 216 gal (820 liters)  
 Hydraulic System ..... 79 gal (300 liters)  
 Hydraulic Sump Tank ..... 39 gal (147 liters)  
 Final Drive (per side) ..... 2.6 gal (10.0 liters)  
 Swing Drive ..... 1.3 gal (5.0 liters)  
 Engine Oil ..... 10.8 gal (40.9 liters)  
 DEF Tank ..... 31.7 gal (120 liters)  
 Cooling System ..... 9.5 gal (35.9 liters)

#### Operating Weight

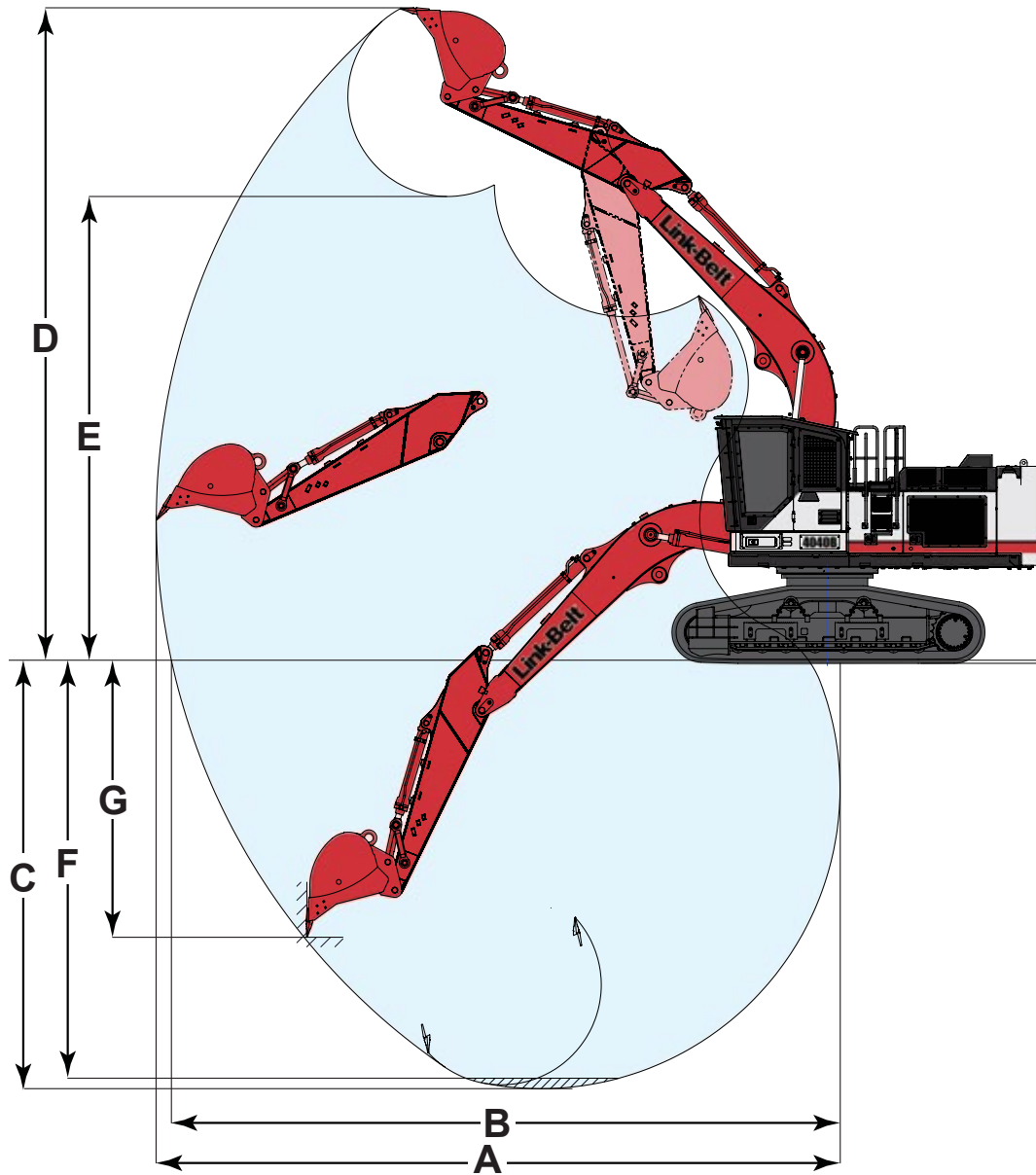
4040 RB High-Narrow - Operating mass with 6.15m HD Boom, 3.18m Arm, 700mm grouser shoe, operator, lubricant, coolant and full fuel tank (Bucket is not included.)  
 ..... 87,400 lb (39,700 kg)  
 4040 RB High-Wide - Operating mass with 6.15m HD Boom, 3.18m Arm, 700mm grouser shoe, operator, lubricant, coolant and full fuel tank (Bucket is not included.)  
 ..... 87,800 lb (39,800 kg)

### TRANSPORTATION DIMENSIONS



# Link-Belt Forestry 4040B Road Builder

## WORKING RANGE



### 4040B RB

### Standard Lift Position

### High-Lift Position

Machine Equipped with 20' 2.1" (6.2m) Boom, 10' 5.2" (3.2m) Arm	High-Narrow Undercarriage	High-Wide Undercarriage	High-Narrow Undercarriage	High-Wide Undercarriage
A. Maximum Reach	34' 4.2" (10.5m)	34' 3.4" (10.5m)	34' 4.2" (10.5m)	34' 3.4" (10.5m)
B. Maximum Reach @ Ground Level	27' 2.4" (8.3m)	27' 2.4" (8.3m)	27' 2.4" (8.3m)	27' 2.4" (8.3m)
C. Maximum Dig Depth	22' 6.9" (6.9m)	22' 4.1" (6.8m)	18' 8.4" (5.7m)	18' 5.7" (5.6m)
D. Maximum Dig Height	33' 9.5 (10.3m)	34' 0.3" (10.4m)	38' 2.7" (11.7m)	38' 5.4" (11.7m)
E. Maximum Dump Height	23' 11.8" (7.3m)	24' 2.6" (7.4m)	27' 11.4" (8.5m)	28' 2.2" (8.6m)
F. Digging Depth 8' (2.4m) Level Bottom	22' 0.6" (6.9m)	22' 4.1" (6.8m)	18' 2.1" (5.5m)	17' 11.4" (5.5m)
G. Maximum Vertical Wall Depth	14' 8.4" (4.5m)	15' 5.6" (4.4m)	14' 8.4" (4.5m)	14' 5.6" (4.4m)

LBX Company

For more information, visit us at [www.LBXCO.com](http://www.LBXCO.com)  
 LBX® and Link-Belt® are registered trademarks. Copyright 2023. All rights reserved.  
 We are constantly improving our products and therefore reserve the right to change designs and specifications.

#LBX2482

**Link-Belt**  
**FORESTRY**

# Link-Belt Forestry 4040B Road Builder

## LIFT CHARTS - HIGH NARROW

High Narrow Standard Lift Position 10'5" (3.18 m) HD Arm with 20' 2" (6.15m) Boom

		5'0" (1.5 m)		10'0" (3.0 m)		15'0" (4.5 m)		20'0" (6.0 m)		25'0" (7.5m)		Cap At Max. Reach	
		End	Side	End	Side	End	Side	End	Side	End	Side	End	Side
25'0"	lbs											11,000*	11,000*
(7.5m)	kg											4,985*	4,985*
20'0"	lbs							16,000*	16,000*	14,650*	14,650*	10,550*	10,550*
(6.0m)	kg							7,255*	7,255*	6,645*	6,645*	4,785*	4,785*
15'0"	lbs					21,950*	21,950*	17,950*	17,950*	15,850*	15,850*	10,600*	10,600*
(4.5m)	kg					9,955*	9,955*	8,140*	8,140*	7,185*	7,185*	4,805*	4,805*
10'0"	lbs					27,250*	27,250*	20,450*	20,450*	17,050*	17,050*	11,000*	11,000*
(3.0m)	kg					12,360*	12,360*	9,275*	9,275*	7,730*	7,730*	4,985*	4,985*
5'0"	lbs					31,250*	31,250*	22,600*	22,600*	18,150*	18,150*	11,850*	11,850*
(1.5m)	kg					14,170*	14,170*	10,250*	10,250*	8,230*	8,230*	5,375*	5,375*
Ground	lbs			12,750*	12,750*	32,500*	32,500*	23,750*	23,750*	18,700*	18,700*	13,300*	13,300*
Line	kg			5,780*	5,780*	14,740*	14,740*	10,770*	10,770*	8,480*	8,480*	6,030*	6,030*
-5'0"	lbs	15,350*	15,350*	23,650*	23,650*	31,450*	31,450*	23,450*	23,450*	18,250*	18,250*	15,900*	15,900*
(-2.0m)	kg	6,960*	6,960*	10,725*	10,725*	14,265*	14,265*	10,635*	10,635*	8,275*	8,275*	7,210*	7,210*
-10'0"	lbs			37,850*	37,850*	28,200*	28,200*	21,300*	21,300*			16,200*	16,200*
(-3.5m)	kg			17,165*	17,165*	12,790*	12,790*	9,660*	9,660*			7,345*	7,345*
-15'0"	lbs			28,650*	28,650*	21,750*	21,750*					15,400*	15,400*
(-5.0m)	kg			12,995*	12,995*	9,865*	9,865*					6,985*	6,985*

High Narrow High Lift Position 10'5" (3.18 m) HD Arm with 20' 2" (6.15m) Boom

		10'0" (3.0 m)		15'0" (4.5 m)		20'0" (6.0 m)		25'0" (7.5m)		Cap At Max. Reach	
		End	Side	End	Side	End	Side	End	Side	End	Side
30'0"	lbs									12,250*	12,250*
(9.0m)	kg									5,555*	5,555*
25'0"	lbs					15,650*	15,650*			11,000*	11,000*
(7.5m)	kg					7,095*	7,095*			4,985*	4,985*
20'0"	lbs			17,150*	17,150*	17,550*	17,550*	14,650*	14,650*	10,550*	10,550*
(6.0m)	kg			7,775*	7,775*	7,960*	7,960*	6,645*	6,645*	4,785*	4,785*
15'0"	lbs	40,350*	40,350*	27,500*	27,500*	21,650*	21,650*	18,200*	18,200*	10,600*	10,600*
(4.5m)	kg	18,300*	18,300*	12,470*	12,470*	9,820*	9,820*	8,255*	8,255*	4,805*	4,805*
10'0"	lbs			31,350*	31,350*	23,300*	23,300*	18,800*	18,800*	11,000*	11,000*
(3.0m)	kg			14,220*	14,220*	10,565*	10,565*	8,525*	8,525*	4,985*	4,985*
5'0"	lbs			33,050*	33,050*	24,200*	24,200*	19,050*	19,050*	11,850*	11,850*
(1.5m)	kg			14,990*	14,990*	10,975*	10,975*	8,640*	8,640*	5,375*	5,375*
Ground	lbs	12,750*	12,750*	31,600*	31,600*	23,700*	23,700*	18,350*	18,350*	13,300*	13,300*
Line	kg	5,780*	5,780*	14,330*	14,330*	10,750*	10,750*	8,320*	8,320*	6,030*	6,030*
-5'0"	lbs	23,650*	23,650*	27,650*	27,650*	21,350*	21,350*	16,150*	16,150*	13,600*	13,600*
(-2.0m)	kg	10,725*	10,725*	12,540*	12,540*	9,680*	9,680*	7,325*	7,325*	6,165*	6,165*
-10'0"	lbs			21,200*	21,200*	16,600*	16,600*			11,600*	11,600*
(-3.5m)	kg			9,615*	9,615*	7,525*	7,525*			5,260*	5,260*

**Notes: Lifting Capacities.**

1. Lifting capacities shown should not be exceeded. Weight of all lifting accessories must be deducted from the above lifting capacities. Lifting capacities for Log Loader attachment include a heel rack, but not grapple. Addition of grapple weight must be deducted from lift capacities.

2. Lifting capacities are based on machine standing on firm, uniform supporting surface. User must make allowances for job conditions such as soft or uneven ground.

3. Lifting capacities shown do not exceed 75% of minimum tipping loads or 87% of hydraulic capacities. Capacities marked w/ an asterisk (\*) are limited by hydraulic capacities.

4. Least stable position is over the side.

5. Operator should be fully acquainted with the Operator's Manual & Operating Safety Booklet, furnished by L BX before operating the machine.

6. Capacities apply only to the machine as originally manufactured and normally equipped by L BX Company.



# Link-Belt Forestry 4040B Road Builder

## LIFT CHARTS - HIGH WIDE

High Wide Standard Lift Position 10'5" (3.18 m) HD Arm with 20' 2" (6.15m) Boom

		5'0" (1.5 m)		10'0" (3.0 m)		15'0" (4.5 m)		20'0" (6.0 m)		25'0" (7.5m)		Cap At Max. Reach	
		End	Side	End	Side	End	Side	End	Side	End	Side	End	Side
25'0"	lbs											10,950*	10,950*
(7.5m)	kg											4,965*	4,965*
20'0"	lbs							16,100*	16,100*	14,850*	14,850*	10,550*	10,550*
(6.0m)	kg							7,300*	7,300*	6,735*	6,735*	4,785*	4,785*
15'0"	lbs					22,200*	22,200*	18,100*	18,100*	15,900*	15,900*	10,600*	10,600*
(4.5m)	kg					10,065*	10,065*	8,210*	8,210*	7,210*	7,210*	4,805*	4,805*
10'0"	lbs					27,500*	27,500*	20,550*	20,550*	17,100*	17,100*	11,050*	11,050*
(3.0m)	kg					12,470*	12,470*	9,320*	9,320*	7,755*	7,755*	5,010*	5,010*
5'0"	lbs					31,350*	31,350*	22,700*	22,700*	18,200*	18,200*	11,900*	11,900*
(1.5m)	kg					14,220*	14,220*	10,295*	10,295*	8,255*	8,255*	5,395*	5,395*
Ground	lbs			13,250*	13,250*	32,500*	32,500*	23,750*	23,750*	18,700*	18,700*	13,400*	13,400*
Line	kg			6,010*	6,010*	14,740*	14,740*	10,770*	10,770*	8,480*	8,480*	6,075*	6,075*
-5'0"	lbs	15,850*	15,850*	24,250*	24,250*	31,350*	31,350*	23,400*	23,400*	18,150*	18,150*	16,050*	16,050*
(-2.0m)	kg	7,185*	7,185*	10,995*	10,995*	14,220*	14,220*	10,610*	10,610*	8,230*	8,230*	7,280*	7,280*
-10'0"	lbs			38,000*	38,000*	28,000*	28,000*	21,150*	21,150*			16,200*	16,200*
(-3.5m)	kg			17,235*	17,235*	12,700*	12,700*	9,590*	9,590*			7,345*	7,345*
-15'0"	lbs			28,000*	28,000*	21,300*	21,300*					15,350*	15,350*
(-5.0m)	kg			12,700*	12,700*	9,660*	9,660*					6,960*	6,960*

High Wide High Lift Position 10'5" (3.18 m) HD Arm with 20' 2" (6.15m) Boom

		10'0" (3.0 m)		15'0" (4.5 m)		20'0" (6.0 m)		25'0" (7.5m)		Cap At Max. Reach	
		End	Side	End	Side	End	Side	End	Side	End	Side
30'0"	lbs									12,150*	12,150*
(9.0m)	kg									5,510*	5,510*
25'0"	lbs					15,700*	15,700*			10,950*	10,950*
(7.5m)	kg					7,120*	7,120*			4,965*	4,965*
20'0"	lbs			17,350*	17,350*	17,700*	17,700*	14,850*	14,850*	10,550*	10,550*
(6.0m)	kg			7,865*	7,865*	8,025*	8,025*	6,735*	6,735*	4,785*	4,785*
15'0"	lbs	40,950*	40,950*	27,700*	27,700*	21,700*	21,700*	18,250*	18,250*	10,600*	10,600*
(4.5m)	kg	18,570*	18,570*	12,560*	12,560*	9,840*	9,840*	8,275*	8,275*	4,805*	4,805*
10'0"	lbs			31,500*	31,500*	23,350*	23,350*	18,850*	18,850*	11,050*	11,050*
(3.0m)	kg			14,285*	14,285*	10,590*	10,590*	8,550*	8,550*	5,010*	5,010*
5'0"	lbs			33,050*	33,050*	24,200*	24,200*	19,050*	19,050*	11,900*	11,900*
(1.5m)	kg			14,990*	14,990*	10,975*	10,975*	8,640*	8,640*	5,395*	5,395*
Ground	lbs	13,250*	13,250*	31,450*	31,450*	23,650*	23,650*	18,300*	18,300*	13,400*	13,400*
Line	kg	6,010*	6,010*	14,265*	14,265*	10,725*	10,725*	8,300*	8,300*	6,075*	6,075*
-5'0"	lbs	24,250*	24,250*	27,400*	27,400*	21,200*	21,200*	16,000*	16,000*	13,500*	13,500*
(-2.0m)	kg	10,995*	10,995*	12,425*	12,425*	9,615*	9,615*	7,255*	7,255*	6,120*	6,120*
-10'0"	lbs			20,800*	20,800*	16,250*	16,250*			11,500*	11,500*
(-3.5m)	kg			9,430*	9,430*	7,370*	7,370*			5,215*	5,215*

**Notes: Lifting Capacities.**

1. Lifting capacities shown should not be exceeded. Weight of all lifting accessories must be deducted from the above lifting capacities. Lifting capacities for Log Loader attachment include a heel rack, but not grapple. Addition of grapple weight must be deducted from lift capacities.

2. Lifting capacities are based on machine standing on firm, uniform supporting surface. User must make allowances for job conditions such as soft or uneven ground.

3. Lifting capacities shown do not exceed 75% of minimum tipping loads or 87% of hydraulic capacities. Capacities marked w/ an asterisk (\*) are limited by hydraulic capacities.

4. Least stable position is over the side.

5. Operator should be fully acquainted with the Operator's Manual & Operating Safety Booklet, furnished by LBX before operating the machine.

6. Capacities apply only to the machine as originally manufactured and normally equipped by LBX Company.





# 4040B

## TIMBER LOADER - PRELIMINARY SPEC SHEET

### TECH SPECIFICATIONS

#### Engine

Isuzu AQ-6HK1X  
 Horsepower (SAE J 1349, ISO 9249) ..... 253hp (189 kW)  
 Displacement ..... 475 cu in (7790 cc)  
 Maximum Torque (SAE J 1349, ISO 9249) ..... 711 lbf-ft (964 N-m)  
 Starter ..... 24V-5.0kW  
 Alternator ..... 90 amp  
 Voltage ..... 24V

#### Hydraulic System

##### Hydraulic Pumps

Main pumps - 2 variable displacement axial piston pumps with regulating system  
 Max. Oil Flow ..... 2 x 64.2 gpm (2 x 243 L/min)  
 Working Circuit Pressure  
 Boom/Arm/Heel ..... 4970 psi (34.3 MPa)  
 Swing Circuit ..... 4410 psi (30.4 MPa)  
 Travel Circuit ..... 4970 psi (34.3 MPa)

##### Pilot Pump - 1 Gear Pump

Max. Oil Flow ..... 7.5 gpm (28.5 L/min)  
 Working Circuit Pressure ..... 570 psi (3.9 MPa)

##### Aux. Pump - 1 Gear pump

Max. Oil Flow ..... 9.2 gpm (35.0 L/min)  
 Working Circuit Pressure ..... 2990 psi (20.6 MPa)

##### Hydraulic Cylinders - NO. of Cylinders - Bore X Rod Diameter X Stroke

Boom 2 - 5.91" (150mm) X 4.13" (105mm) X 47.64" (1210mm)  
 Arm 1 - 6.69" (170mm) X 4.53" (115mm) X 68.11" (1730mm)  
 Heel 1 - 5.12" (130mm) X 3.54" (90mm) X 42.24" (1073mm)

#### Swing

Maximum Swing Speed ..... 0-9.1 rpm  
 Swing Torque ..... 82,656 lbf-ft (112,000 N-m)

#### Undercarriage

Carrier Rollers ..... 2 per side  
 Track Rollers ..... 8 per side  
 Link Pitch ..... 8.50" (216mm)  
 Shoes ..... 48 per side  
 Shoe Width ..... 27.5" (700mm)  
 Ground Pressure ..... 9.57 psi (0.066 MPa)

#### Travel System

Travel Speeds ..... 1.6-2.6 mph (2.5-4.2 km/h)  
 Drawbar Pull ..... 69,500 lbf (309 kN)  
 Gradeability ..... 70% (35°)

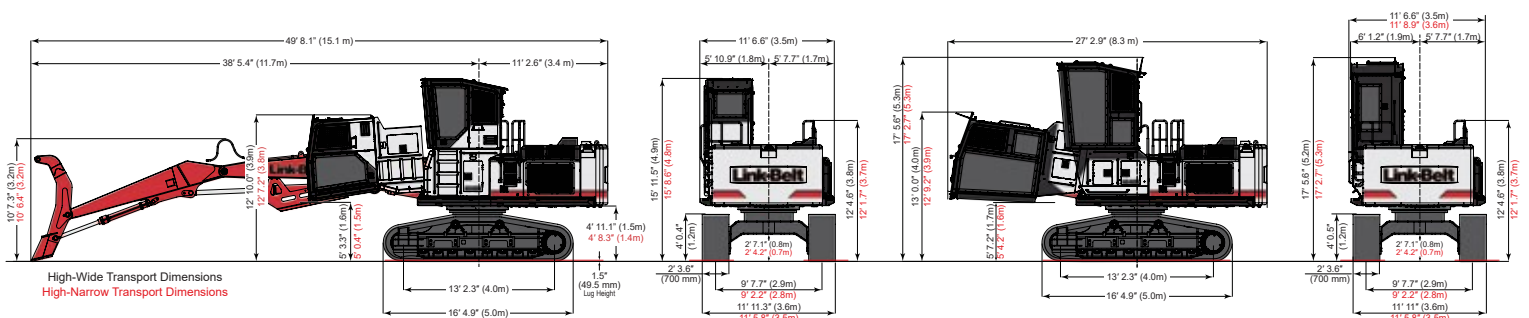
#### Lubricant and Coolant Capacity

Fuel Tank ..... 216 gal (820 liters)  
 Hydraulic System ..... 79 gal (300 liters)  
 Hydraulic Sump Tank ..... 39 gal (147 liters)  
 Final Drive (per side) ..... 2.5 gal (9.5 liters)  
 Swing Drive ..... 1.3 gal (5.0 liters)  
 Engine Oil ..... 10.3 gal (38.9 liters)  
 DEF Tank ..... 31.7 gal (120 liters)  
 Cooling System ..... 12.2 gal (46.2 liters)

#### Operating Weight

Side Entry Cab Operating Weight (no tool)\* ..... 94,517 lbs (42,872 kg)  
 Rear Entry Cab Operating Weight (no tool)\* ..... 95,780 lbs (43,445 kg)

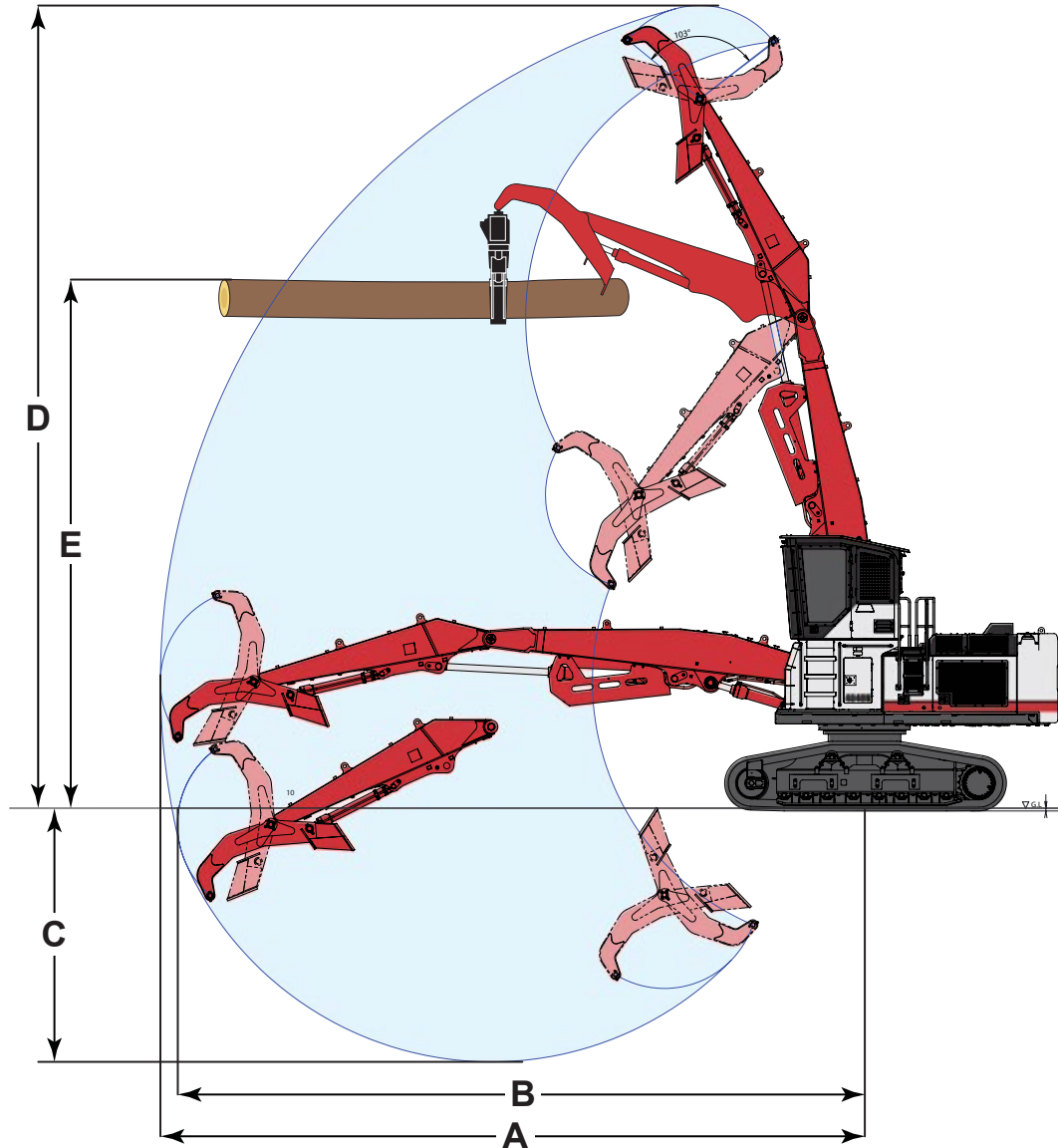
### TRANSPORTATION DIMENSIONS



**Link-Belt**  
 FORESTRY

# Link-Belt Forestry 4040B Timber Loader

## WORKING RANGE



### 4040B TL

Machine Equipped with 21' 4" (6.50m) Boom, 14' 0" (4.27m) Arm	High-Narrow Undercarriage	High-Wide Undercarriage
A. Maximum Reach	40' 10.6" (12.5m)	40' 10.6" (12.5m)
B. Maximum Reach @ Ground Level	40' 2.3" (12.3m)	40' 2.3" (12.3m)
C. Maximum Depth	14' 11.3" (4.6m)	14' 8.4" (4.5m)
D. Maximum Height	46' 3.1" (14.1m)	46' 6.3" (14.2m)
E. Maximum Log Level Height	31' 8.7" (9.7m)	30' 11.7" (9.4m)

LBX Company

For more information, visit us at [www.LBXCO.com](http://www.LBXCO.com)  
 LBX® and Link-Belt® are registered trademarks. Copyright 2023. All rights reserved.  
 We are constantly improving our products and therefore reserve the right to change designs and specifications.

#LBX2482

**Link-Belt**  
 FORESTRY



# Link-Belt Forestry 4040B Timber Loader

## LIFT CHARTS - HIGH NARROW

14' 0" (4.27 m) Arm with 21' 4" (6.50 m) Boom and Live-Heel (High-Narrow Undercarriage)

		10'0" (3.0 m)		15'0" (4.5 m)		20'0" (6.0 m)		25'0" (7.5m)		30'0" (9.0 m)		35'0" (10.5 m)		40'0" (12.0 m)		Cap At Max. Reach	
		End	Side	End	Side	End	Side	End	Side	End	Side	End	Side	End	Side	End	Side
40' 0"	lbs					22,800*	22,800*									16,400*	16,400*
(12.0m)	kg					10,340*	10,340*									7,435*	7,435*
35' 0"	lbs							18,950*	18,950*							13,550*	13,550*
(10.5m)	kg							8,595*	8,595*							6,145*	6,145*
30' 0"	lbs							18,300*	18,300*	16,400*	15,450					12,100*	12,100*
(9.0m)	kg							8,300*	8,300*	7,435*	7,005					5,485*	5,485*
25' 0"	lbs							18,300*	18,300*	16,250*	15,550	14,300*	11,700			11,300*	10,600
(7.5m)	kg							8,300*	8,300*	7,370*	7,050	6,485*	5,305			5,125*	4,805
20' 0"	lbs							18,750*	18,750*	16,400*	15,400	14,250*	11,750			10,850*	9,600
(6.0m)	kg							8,500*	8,500*	7,435*	6,985	6,460*	5,325			4,920*	4,350
15' 0"	lbs					23,300*	23,300*	19,550*	19,550*	16,750*	15,100	14,300*	11,650			10,650*	9,050
(4.5m)	kg					10,565*	10,565*	8,865*	8,865*	7,595*	6,845	6,485*	5,280			4,830*	4,105
10' 0"	lbs					25,300*	25,300*	20,500*	19,500	17,050*	14,650	14,200*	11,400	10,900*	9,050	9,850*	8,700
(3.0m)	kg					11,475*	11,475*	9,295*	8,845	7,730*	6,645	6,440*	5,170	4,940*	4,105	4,465*	3,945
5' 0"	lbs					26,800*	26,100	21,050*	18,700	17,100*	14,150	13,800*	11,150	9,950*	8,950	8,650*	8,650*
(1.5m)	kg					12,155*	11,835	9,545*	8,480	7,755*	6,415	6,255*	5,055	4,510*	4,055	3,920*	3,920*
Ground	lbs			35,150*	35,150*	26,950*	24,750	20,800*	17,950	16,500*	13,750	12,800*	10,900	7,750*	7,750*	7,200*	7,200*
Line	kg			15,940*	15,940*	12,220*	11,225	9,430*	8,140	7,480*	6,235	5,805*	4,940	3,515*	3,515*	3,265*	3,265*
-5' 0"	lbs	12,150*	12,150*	33,700*	33,700*	25,150*	23,900	19,300*	17,400	14,900*	13,450	10,800*	10,750			6,450*	6,450*
(-2.0m)	kg	5,510*	5,510*	15,285*	15,285*	11,405*	10,840	8,750*	7,890	6,755*	6,100	4,895*	4,875			2,925*	2,925*
-10' 0"	lbs	17,150*	17,150*	27,450*	27,450*	21,100*	21,100*	16,150*	16,150*	11,900*	11,900*					7,500*	7,500*
(-3.5m)	kg	7,775*	7,775*	12,450*	12,450*	9,570*	9,570*	7,325*	7,325*	5,395*	5,395*					3,400*	3,400*

14' 0" (4.27 m) Arm with 21' 4" (6.50 m) Boom and Live-Heel (High-Wide Undercarriage)

		10'0" (3.0 m)		15'0" (4.5 m)		20'0" (6.0 m)		25'0" (7.5m)		30'0" (9.0 m)		35'0" (10.5 m)		40'0" (12.0 m)		Cap At Max. Reach	
		End	Side	End	Side	End	Side	End	Side	End	Side	End	Side	End	Side	End	Side
40' 0"	lbs					22,750*	22,750*									16,200*	16,200*
(12.0m)	kg					10,315*	10,315*									7,345*	7,345*
35' 0"	lbs							18,900*	18,900*							13,450*	13,450*
(10.5m)	kg							8,570*	8,570*							6,100*	6,100*
30' 0"	lbs							18,250*	18,250*	16,400*	16,300					12,050*	12,050*
(9.0m)	kg							8,275*	8,275*	7,435*	7,390					5,465*	5,465*
25' 0"	lbs							18,300*	18,300*	16,250*	16,250*	14,300*	12,400			11,250*	11,150*
(7.5m)	kg							8,300*	8,300*	7,370*	7,370*	6,485*	5,620			5,100*	5,055*
20' 0"	lbs							18,800*	18,800*	16,400*	16,250	14,250*	12,400			10,800*	10,150
(6.0m)	kg							8,525*	8,525*	7,435*	7,370	6,460*	5,620			4,895*	4,600
15' 0"	lbs					23,400*	23,400*	19,600*	19,600*	16,750*	15,900	14,300*	12,300	11,150*	9,600	10,650*	9,550
(4.5m)	kg					10,610*	10,610*	8,890*	8,890*	7,595*	7,210	6,485*	5,575	5,055*	4,350	4,830*	4,330
10' 0"	lbs					25,400*	25,400*	20,550*	20,550*	17,050*	15,450	14,200*	12,050	10,850*	9,600	9,800*	9,250
(3.0m)	kg					11,520*	11,520*	9,320*	9,320*	7,730*	7,005	6,440*	5,465	4,920*	4,350	4,445*	4,195
5' 0"	lbs					26,850*	26,850*	21,100*	19,700	17,050*	14,950	13,800*	11,800	9,850*	9,500	8,600*	8,600*
(1.5m)	kg					12,175*	12,175*	9,570*	8,935	7,730*	6,780	6,255*	5,350	4,465*	4,305	3,900*	3,900*
Ground	lbs			34,350*	34,350	26,900*	26,250	20,800*	18,950	16,450*	14,550	12,750*	11,550	7,600*	7,600*	7,100*	7,100*
Line	kg			15,580*	15,580	12,200*	11,905	9,430*	8,595	7,460*	6,595	5,780*	5,235	3,445*	3,445*	3,220*	3,220*
-5' 0"	lbs	12,150*	12,150	33,500*	33,500*	25,000*	25,000*	19,200*	18,450	14,800*	14,250	10,650*	10,650*			6,450*	6,450*
(-2.0m)	kg	5,510*	5,510	15,195*	15,195*	11,335*	11,335*	8,705*	8,365	6,710*	6,460	4,830*	4,830*			2,925*	2,925*
-10' 0"	lbs	17,400*	17,400*	27,050*	27,050*	20,850*	20,850*	15,950*	15,950*	11,700*	11,700*					7,550*	7,550*
(-3.5m)	kg	7,890*	7,890*	12,265*	12,265*	9,455*	9,455*	7,230*	7,230*	5,305*	5,305*					3,420*	3,420*

**Notes: Lifting Capacities.**

1. Lifting capacities shown should not be exceeded. Weight of all lifting accessories must be deducted from the above lifting capacities. Lifting capacities for Log Loader attachment include a heel rack, but not grapple. Addition of grapple weight must be deducted from lift capacities.

2. Lifting capacities are based on machine standing on firm, uniform supporting surface. User must make allowances for job conditions such as soft or uneven ground.

3. Lifting capacities shown do not exceed 75% of minimum tipping loads or 87% of hydraulic capacities. Capacities marked w/ an asterisk (\*) are limited by hydraulic capacities.

4. Least stable position is over the side.

5. Operator should be fully acquainted with the Operator's Manual & Operating Safety Booklet, furnished by LBX before operating the machine.

6. Capacities apply only to the machine as originally manufactured and normally equipped by LBX Company.





# Link-Belt® FORESTRY 4040B

**LBX Company**

[lbxco.com](http://lbxco.com)

**LBX Company**

For more information, visit us at [www.LBXCO.com](http://www.LBXCO.com). LBX® and Link-Belt® are registered trademarks. Copyright 2023. All rights reserved. We are constantly improving our products and therefore reserve the right to change designs and specifications.

#LBX2482