

# 220 X4S SPECIFICATIONS

**SAE Net Horsepower**  
160 hp (119.3 kW)

**Operating Weight**  
48,900 lbs (22,200 kg)

**Swing Torque**  
47,200 lbf-ft (64.0 kNm)



## ENGINE

Engine	Isuzu AR-4HK1X Final Tier 4 turbocharged diesel engine
SAE J 1349 net horsepower	160 hp (119.3 kW) @ 1600 rpm
Displacement	317 cu in (5.2 L)
Maximum Torque	457 lbf-ft (620 Nm) @ 1500 rpm
Starter	24 V - 5.0 kW
Alternator	90 amp
Battery	(2) 12-volt 92 amp hours

## HYDRAULIC SYSTEM

### Hydraulic Pumps

Pump Output	2 x 55.7 gpm (211 L/min)
Pilot Pump Maximum Flow	4.8 gpm (18 L/min)

### Relief Valve Settings

Boom Up / Arm / Bucket	4,970 psi (34.3 MPa)
in Power Boost	5,410 psi (37.3 MPa)
Swing Circuit	4,260 psi (29.4 MPa)
Travel Circuit	4,970 psi (34.3 MPa)

### Hydraulic Cylinders

### Number of Cylinders - Bore x Stroke

Boom	2 - 4.7" x 49.4" (120 mm x 1255 mm)
Arm	5.5" x 57.5" (140 mm x 1460 mm)
Bucket	4.7" x 39.8" (120 mm x 1010 mm)

## SWING

Swing Speed	11.5 rpm
Tail Swing	9'3" (2.83 m)
Swing Torque	47,200 lbf-ft (64.0 kNm)

# 220 X4S SPECIFICATIONS

## UNDERCARRIAGE

Carrier Rollers	2 per Side
Track Rollers	8 per Side
Track Link Pitch	7.5" (190 mm)
Shoes	49 per Side
Shoe Width	31.5" (800 mm)
Ground Pressure	4.9 psi (0.034 MPa)

## TRAVEL SYSTEM

Travel Speeds	2.1 - 3.5 mph (3.4 - 5.6 km/h)
Drawbar Pull	42,300 lbf (188 kN)
Gradeability	70% (35°)

## ATTACHMENT

HD Boom	18' 8" (5.70 m)
<b>Available Arms</b>	<b>Digging Force</b>
9' 8" (2.94 m)	23,100 lbf (103.0 kN)
with Auto Power Boost	25,100 lbf (112.0 kN)
7' 10" (2.40 m)	27,600 lbf (123.0 kN)
with Auto Power Boost	30,000 lbf (133.0 kN)
Bucket Digging Force	31,800 lbf (142.0 kN)
with Auto Power Boost	34,600 lbf (154.0 kN)

## LUBRICANT AND COOLANT CAPACITY

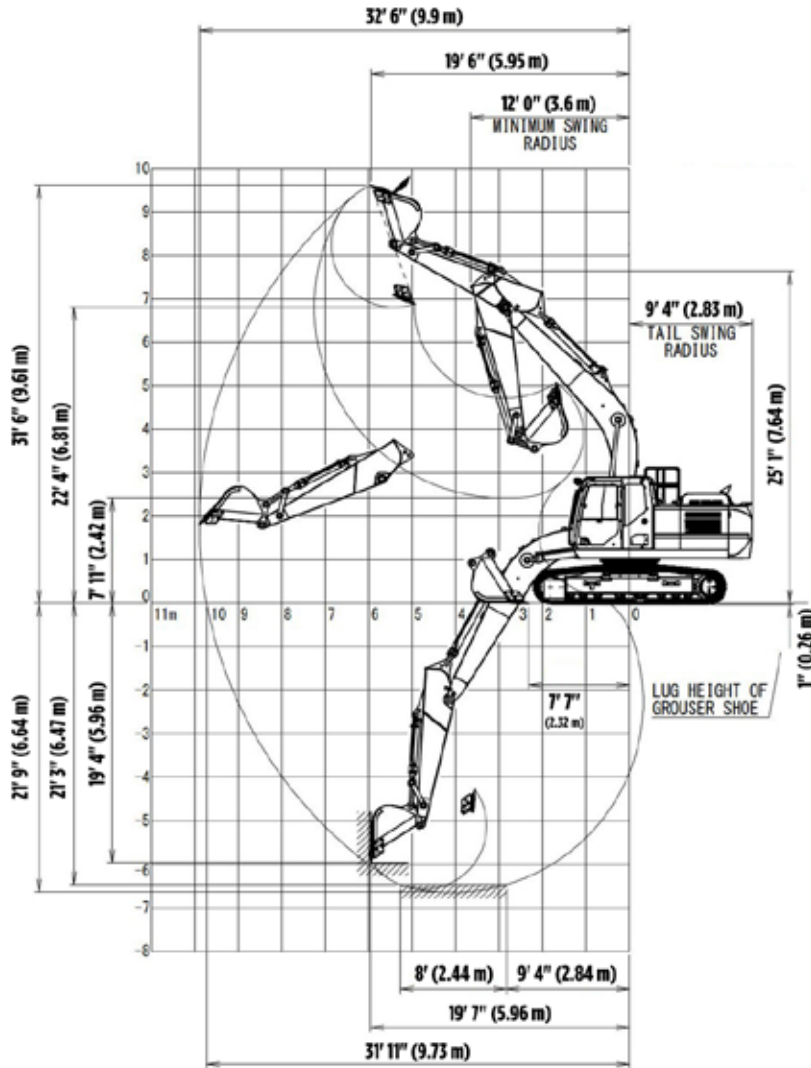
Fuel Tank	108 Gallons (410 Liters)
Hydraulic System	74 Gallons (280 Liters)
Hydraulic Tank	42 Gallons (162 Liters)
Final Drive (per side)	1.3 Gallons (5.0 Liters)
Swing Drive	1.3 Gallons (5.0 Liters)
Engine Oil	6.1 Gallons (23.1 Liters)
DEF Tank	22 Gallons (84 Liters)
Coolant System	8.3 Gallons (31.8 Liters)

## OPERATING WEIGHT

Working weight with 31.5" (800 mm) shoes, 18' 8" (5.70 m) boom, 9' 8" (2.94 m) arm, 1,435 lbs (651 kg) bucket, 8,380 lbs (3 800 kg) counterweight	48,900 lbs (22 200 kg)
--	------------------------

# 220 X4S SPECIFICATIONS

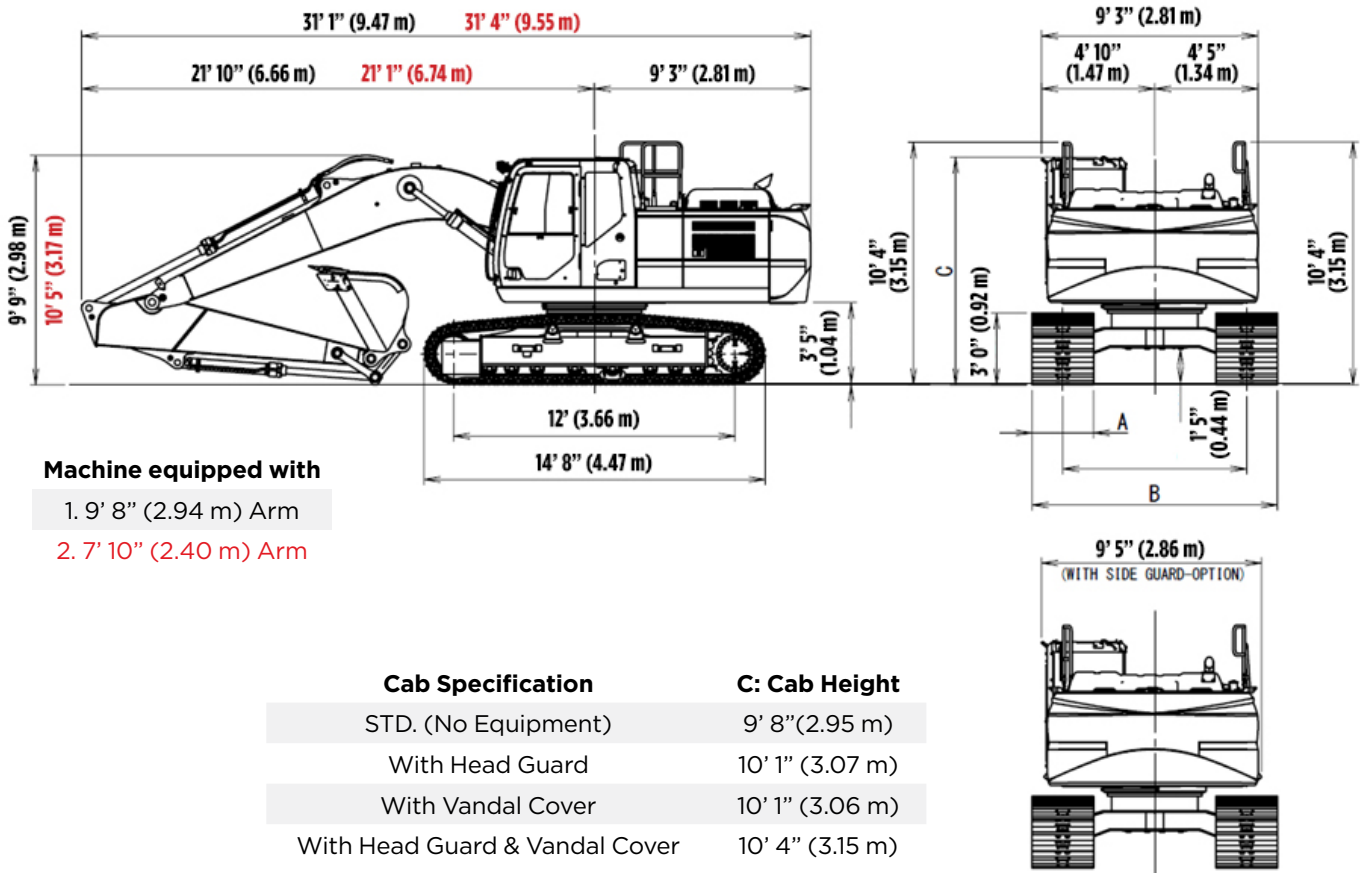
## WORKING RANGE



Machine Equipped with 18' 8" (5.7 m) Boom	Arm 9' 8" (2.94 m)	Arm 7' 10" (2.40 m)
A. Maximum reach	32' 6" (9.90 m)	30' 11" (9.42 m)
B. Maximum reach @ ground level	31' 11" (9.73 m)	30' 4" (9.24 m)
C. Maximum dig depth	21' 10" (6.64 m)	20' 1" (6.11 m)
D. Maximum dig height	31' 6" (9.61 m)	30' 10" (9.40 m)
E. Maximum dump height	22' 4" (6.81 m)	21' 7" (6.59 m)
F. Digging depth 8' (2.44 m) level bottom	21' 3" (6.47 m)	19' 4" (5.90 m)
G. Bucket rotation	177°	177°
H. Maximum vertical wall depth	19' 7" (5.96 m)	18' 0" (5.48 m)

# 220 X4S SPECIFICATIONS

## TRAVEL DIMENSIONS



#LBX2457 · 2/23

LBX® and Link-Belt® are registered trademarks. Copyright 2023. All rights reserved. We are constantly improving our products and therefore reserve the right to change designs and specifications.