

Link-Belt
EXCAVATORS

220, 260, & 370 X4S LONG FRONT

SPEC SHEET (PRELIMINARY)



220 X4S LF SPECIFICATIONS

SAE Net Horsepower
160 hp (119.3 kW)

Operating Weight
52,000 lbs (23,600 kg)

Swing Torque
38,500 lbf-ft (52.2 kNm)



ENGINE

Engine	Isuzu AR-4HK1X Final Tier 4 turbocharged diesel engine
SAE J 1349 net horsepower	160 HP (119.3 kW) @ 1800 min-1 (rpm)
Displacement	317 cu in (5.2 L)
Maximum Torque	457 lbf-ft (620 N-m) @ 1600 min-1 (rpm)
Starter	24 V - 5.0 kW
Alternator	85 amp
Voltage	24 V

HYDRAULIC SYSTEM

Hydraulic Pumps

Pump Output	2 x 55.7 gpm (211 L/min)
Pilot Pump Maximum Flow	4.8 gpm (18 L/min)

Relief Valve Settings

Boom Up / Arm Out	4,970 psi (34.3 MPa)
in Power Boost	5,410 psi (37.3 MPa)
Bucket	3,620 psi (25.0 MPa)
Arm In	3,300 psi (23.0 MPa)
Boom Down	4,270 psi (29.4 MPa)
Swing Circuit	3,480 psi (24.0 MPa)
Travel Circuit	4,970 psi (34.3 MPa)

Hydraulic Cylinders

Number of Cylinders - Bore x Stroke

Boom	2 - 4.7" x 49.4" (120 mm x 1255 mm)
Arm	5.7" x 64.0" (145 mm x 1627 mm)
Bucket	3.7" x 34.7" (95 mm x 881 mm)

SWING

Swing Speed	6.0 rpm
Tail Swing	9' 3" (2.83 m)
Swing Torque	38,500 lbf-ft (52.2 kNm)

220 X4S LF SPECIFICATIONS

UNDERCARRIAGE

Carrier Rollers	2 per Side
Track Rollers	8 per Side
Track Link Pitch	7.5" (190 mm)
Shoes	49 per Side
Shoe Width	31.5" (800 mm)
Ground Pressure	5.4 psi (0.037 MPa)

TRAVEL SYSTEM

Travel Speeds	2.1 - 3.5 mph (3.4 - 5.6 km/h)
Drawbar Pull	42,000 lbf (187 kN)
Gradeability	70% (35°)

ATTACHMENT

Boom	28' 7" (8.7 m)
Available Arms	Digging Force
21' 0" (6.4 m)	10,300 lbf (46.0 kN)
Bucket Digging Force	14,600 lbf (65.0 kN)

LUBRICANT AND COOLANT CAPACITY

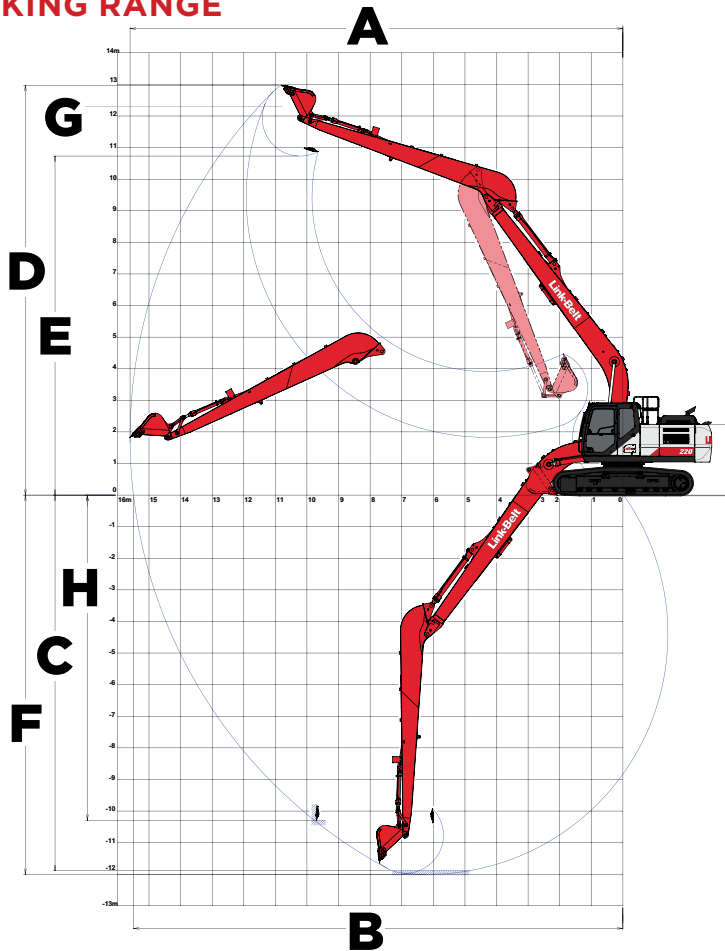
Fuel Tank	108 Gallons (410 Liters)
Hydraulic System	74 Gallons (280 Liters)
Hydraulic Tank	42 Gallons (162 Liters)
Final Drive (per side)	1.2 Gallons (4.5 Liters)
Swing Drive	1.3 Gallons (5.0 Liters)
Engine Oil	6.1 Gallons (23.1 Liters)
DEF Tank	22 Gallons (84 Liters)
Coolant System	8.5 Gallons (32.3 Liters)

OPERATING WEIGHT

Working weight with 31.5" (800 mm) shoes, 28' 7" (8.7 m) boom, 21' 0" (6.4 m) arm, 750 lbs (340 kg) bucket, 10,360 lbs (4,700 kg) counterweight	52,000 lbs (23,600 kg)
--	------------------------

220 X4S LF SPECIFICATIONS

WORKING RANGE



Machine Equipped with 28' 7" (8.7 m) Boom
Arm 20' 1" (6.40 m)

A. Maximum reach 51' 2" (15.6 m)

B. Maximum reach @ ground level 50' 10" (15.49 m)

C. Maximum dig depth 39' 5" (12.01 m)

D. Maximum dig height 42' 7" (12.97 m)

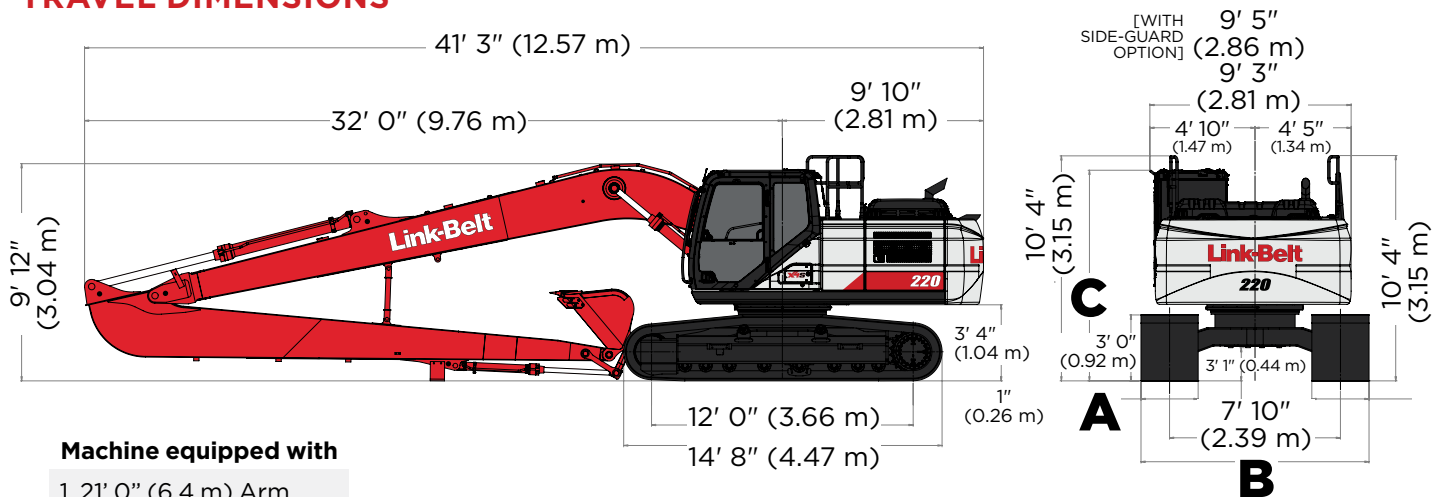
E. Maximum dump height 35' 2" (10.73 m)

F. Digging depth 39' 0" 8' (2.44 m) level bottom 11.89 m

G. Bucket rotation 178°

H. Maximum vertical wall depth 33' 10" (10.30 m)

TRAVEL DIMENSIONS



Machine equipped with
 1. 21' 0" (6.4 m) Arm

Undercarriage	STD	OPTION
A. Shoe Width	31.5" (800 mm)	27.6" (700 mm)
B. Overall Width	10' 6" (3.19 m)	10' 2" (3.09 m)

Cab Specification	C: Cab Height
STD. (No Equipment)	9' 8" (2.95 m)
With Head Guard	10' 1" (3.07 m)
With Vandal Cover	10' 1" (3.06 m)
With Head Guard & Vandal Cover	10' 4" (3.15 m)

220 X4S LF SPECIFICATIONS

LIFT CAPACITIES - RADIUS OF LOAD*

21' 0" (6.4 M) ARM WITH 28' 7" (8.7 M) BOOM WITH POWER-BOOST APPLIED

		0' 0" (0.0 m)		5' 0" (1.5 m)		10' 0" (3.0 m)		15' 0" (4.5 m)		20' 0" (6.0 m)		25' 0" (7.5 m)		30' 0" (9.0 m)		
End	Side	End	Side	End	Side	End	Side	End	Side	End	Side	End	Side	End	Side	
15' 0" (4.5m)	lbs														5,800*	5,800*
	kg														2,670*	2,670*
10' 0" (3.0m)	lbs					18,350*	18,350*			9,100*	9,100*	7,550*	7,550*	6,600*	6,400	
	kg					7,090*	7,090*	5,620*	5,620*	4,210*	4,210*	3,480*	3,480*	3,040*	2,970	
5' 0" (1.5m)	lbs					4,800*	4,800*	15,800*	15,450	11,150*	10,550	8,800*	7,750	7,400*	5,950	
	kg					2,060*	2,060*	7,340*	7,150	5,160*	4,880	4,060*	3,590	3,420*	2,750	
Ground	lbs					4,700*	4,700*	11,350*	11,350*	12,850*	9,550	9,950*	7,100	8,200*	5,500	
Line	kg					2,080*	2,080*	4,920*	4,920*	5,940*	4,410	4,580*	3,290	3,780*	2,560	
-5' 0" (-1.5m)	lbs			4,250*	4,250*	5,950*	5,950*	10,650*	10,650*	14,050*	8,900	10,700	6,650	8,300	5,150	
	kg			1,910*	1,910*	2,650*	2,650*	4,670*	4,670*	6,480*	4,110	4,980	3,070	3,860	2,400	
-10' 0" (-3.0m)	lbs	5,750*	5,750*	5,900*	5,900*	7,600*	7,600*	11,600*	11,600*	14,350	8,550	10,400	6,350	8,050	4,950	
	kg	2,580*	2,580*	2,660*	2,660*	3,380*	3,380*	5,120*	5,120*	6,670	3,960	4,830	2,940	3,740	2,300	
-15' 0" (-4.5m)	lbs	7,100*	7,100*	7,650*	7,650*	9,450*	9,450*	13,400*	12,750	14,200	8,400	10,250	6,200	7,950	4,850	
	kg	3,180*	3,180*	3,430*	3,430*	4,210*	4,210*	5,920*	5,920*	6,610	3,910	4,760	2,880	3,690	2,240	
-20' 0" (-6.0m)	lbs			9,550*	9,550*	11,650*	11,650*	15,950*	13,000	14,300	8,500	10,250	6,200	7,950	4,850	
	kg	3,860*	3,860*	4,260*	4,260*	5,170*	5,170*	7,020*	6,030	6,640	3,940	4,760	2,880	3,690	2,240	
-25' 0" (-7.5m)	lbs			11,600*	11,600*	14,200*	14,200*	17,900*	13,400	13,700*	8,700	10,450	6,350	8,100	5,000	
	kg			5,170*	5,170*	6,290*	6,290*	8,300*	6,210	6,340*	4,040	4,840	2,950	3,750	2,300	
-30' 0" (-9.0m)	lbs					17,350*	17,350*	15,550*	14,000	12,050*	9,150	9,600*	6,700	7,550*	5,300	
	kg					7,650*	7,650*	7,280*	6,480	5,640*	4,220	4,500*	3,090	3,590*	2,430	
-35' 0" (-10.5m)	lbs									9,050*	9,050*					
	kg							5,630*	5,630*	4,370*	4,370*					

		35' 0" (10.5 m)		40' 0" (12.0 m)		45' 0" (13.5 m)		Cap At Max. Reach	
End	Side	End	Side	End	Side	End	Side	End	Side
35' 0" (10.5m)	lbs	4,650*	4,650*					3,100*	3,100*
	kg							1,400*	1,400*
30' 0" (9.0m)	lbs			3,550*	3,550*			2,950*	2,950*
	kg			1,920*	1,920*			1,340*	1,340*
25' 0" (7.5m)	lbs	4,700*	4,700*	4,800*	4,400			2,900*	2,900*
	kg	2,150*	2,150*	2,170*	2,050			1,320*	1,320*
20' 0" (6.0m)	lbs	5,000*	5,000*	4,950*	4,300	3,000*	3,000*	2,900*	2,900*
	kg	2,300*	2,300*	2,260*	2,000	1,750*	1,550	1,320*	1,320*
15' 0" (4.5m)	lbs	5,450*	5,300	5,250*	4,100	4,400*	3,200	2,950*	2,950*
	kg	2,500*	2,460	2,390*	1,920	2,300*	1,510	1,350*	1,350*
10' 0" (3.0m)	lbs	6,000*	5,000	5,600*	3,900	4,950	3,100	3,050*	2,800
	kg	2,750*	2,310	2,550*	1,830	2,310	1,460	1,390*	1,280
5' 0" (1.5m)	lbs	6,550*	4,650	5,850	3,700	4,800	3,000	3,200*	2,700
	kg	3,010*	2,170	2,720	1,730	2,240	1,400	1,460*	1,230
Ground	lbs	6,900	4,400	5,650	3,550	4,700	2,900	3,450*	2,650
Line	kg	3,210	2,030	2,630	1,640	2,190	1,340	1,560*	1,210
-5' 0" (-1.5m)	lbs	6,700	4,150	5,500	3,400	4,600	2,800	3,750*	2,700
	kg	3,100	1,930	2,550	1,570	2,140	1,300	1,690*	1,220
-10' 0" (-3.0m)	lbs	6,500	4,000	5,400	3,300			4,150*	2,800
	kg	3,020	1,850	2,500	1,520	2,050*	1,280	1,880*	1,270
-15' 0" (-4.5m)	lbs	6,450	3,900	5,350	3,250			4,800*	3,000
	kg	2,980	1,820	2,480	1,510			2,160*	1,370
-20' 0" (-6.0m)	lbs	6,450	3,950					5,550	3,400
	kg	2,990	1,820	2,520	1,540			2,500	1,530
-25' 0" (-7.5m)	lbs	6,650	4,100					6,500	4,050
	kg	3,060	1,890					2,910	1,800
-30' 0" (-9.0m)	lbs							7,350*	5,200
	kg							3,320*	2,300
-35' 0" (-10.5m)	lbs							7,550*	7,550*
	kg							3,420*	3,420*

NOTES: EXCAVATOR LIFTING CAPACITIES

- The lift capacities above are based on the ISO standard, ISO 10567:2007 - "Earthmoving Machinery - Hydraulic Excavators - Lift Capacity"
- Lifting capacities shown should not be exceeded. The weight of all lifting accessories must be deducted from the above lifting capacities. The use of a work tool attachment point as the lift point could affect the machine lift performance.
- Lifting capacities are based on the machine standing on a firm, uniform supporting surface. Users must make allowances for job conditions such as soft or uneven ground.
- Lifting capacities shown do not exceed 75% of the minimum tipping loads or 87% of the hydraulic capacities. Lifting capacities marked with an asterisk (*) are limited by hydraulic capacities. The least stable position is lifting over the side.
- Operators should be fully acquainted with the Operator's Manual & Operating Safety Booklet, furnished by L&B Company LLC before operating the machine.
- Lift capacities apply only to the machine as originally manufactured and normally equipped by L&B Company LLC.
- This lift chart is without bucket.

260 X4S LF SPECIFICATIONS



SAE Net Horsepower
177 hp (132.1 kW)

Operating Weight
63,900 lbs (29,000 kg)

Swing Torque
51,600 lbf-ft (69.9 kNm)

ENGINE

Engine	Isuzu AQ-4HK1X Final Tier 4 turbocharged diesel engine
SAE J 1349 net horsepower	177 HP (132.1 kW) @ 2000 min-1 (rpm)
Displacement	317 cu in (5.2 L)
Maximum Torque	458 lbf-ft (621 N-m) @ 1800 min-1 (rpm)
Starter	24 V - 5.0 kW
Alternator	85 amp
Voltage	24 V

HYDRAULIC SYSTEM

Hydraulic Pumps

Pump Output	2 x 61.8 gpm (234 L/min)
Pilot Pump Maximum Flow	5.3 gpm (20 L/min)

Relief Valve Settings

Boom Up / Arm Out	4,970 psi (34.3 MPa)
in Power Boost	5,410 psi (37.3 MPa)
Bucket / Boom Down	4,270 psi (29.4 MPa)
Arm In	3,060 psi (21.1 MPa)
Swing Circuit	3,920 psi (27.0 MPa)
Travel Circuit	4,970 psi (34.3 MPa)

Hydraulic Cylinders

Number of Cylinders - Bore x Stroke

Boom	2 - 5.1" x 52.6" (130 mm x 1335 mm)
Arm	6.0" x 68.4" (150 mm x 1737 mm)
Bucket	3.7" x 34.7" (95 mm x 881 mm)

SWING

Swing Speed	5.4 rpm
Tail Swing	9'10" (2.99 m)
Swing Torque	51,600 lbf-ft (69.9 kNm)

260 X4S LF SPECIFICATIONS

UNDERCARRIAGE

Carrier Rollers	2 per Side
Track Rollers	9 per Side
Track Link Pitch	7.5" (190 mm)
Shoes	51 per Side
Shoe Width	31.5" (800 mm)
Ground Pressure	6.2 psi (0.043 MPa)

TRAVEL SYSTEM

Travel Speeds	2.2 - 3.4 mph (3.5 - 5.5 km/h)
Drawbar Pull	44,700 lbf (199 kN)
Gradeability	70% (35°)

ATTACHMENT

Boom	33' 9" (10.3 m)
Available Arms	Digging Force
26' 3" (8.00 m)	9,060 lbf (40.0 kN)
Bucket Digging Force	17,300 lbf (77.0 kN)

LUBRICANT AND COOLANT CAPACITY

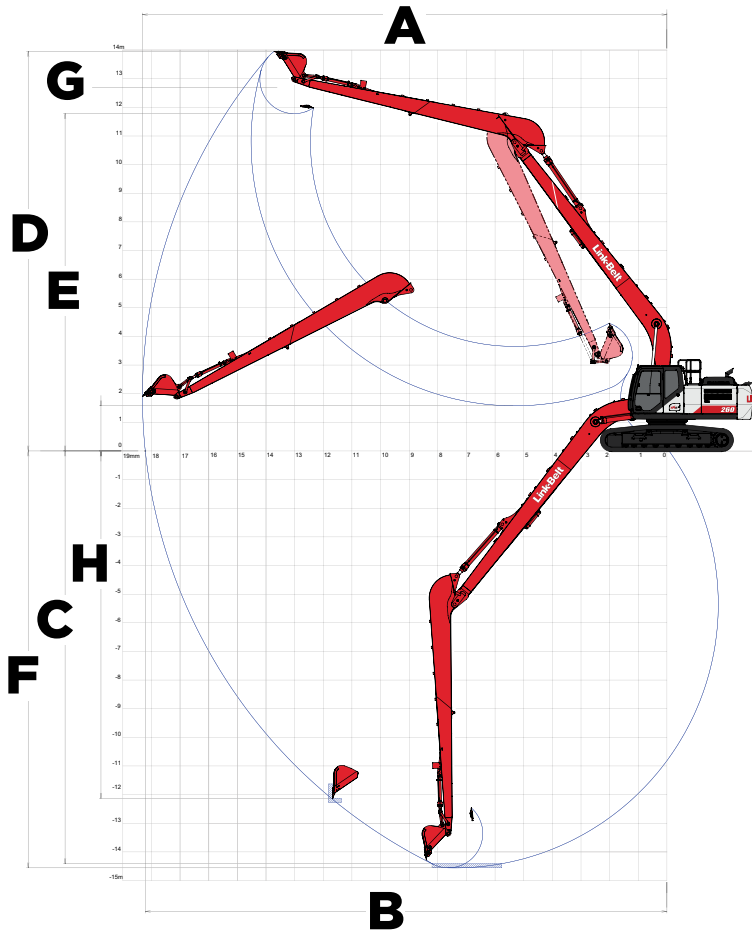
Fuel Tank	108 Gallons (410 Liters)
Hydraulic System	77 Gallons (290 Liters)
Hydraulic Tank	42 Gallons (162 Liters)
Final Drive (per side)	1.2 Gallons (4.5 Liters)
Swing Drive	2.5 Gallons (9.6 Liters)
Engine Oil	6.1 Gallons (23.1 Liters)
DEF Tank	22 Gallons (84 Liters)
Coolant System	8.5 Gallons (32.3 Liters)

OPERATING WEIGHT

Working weight with 31.5" (800 mm) shoes, 33' 9" (10.3 m) boom, 26' 3" (8.00 m) arm, 750 lbs (340 kg) bucket, 16,200 lbs (7,350 kg) counterweight	63,900 lbs (29,000 kg)
---	------------------------

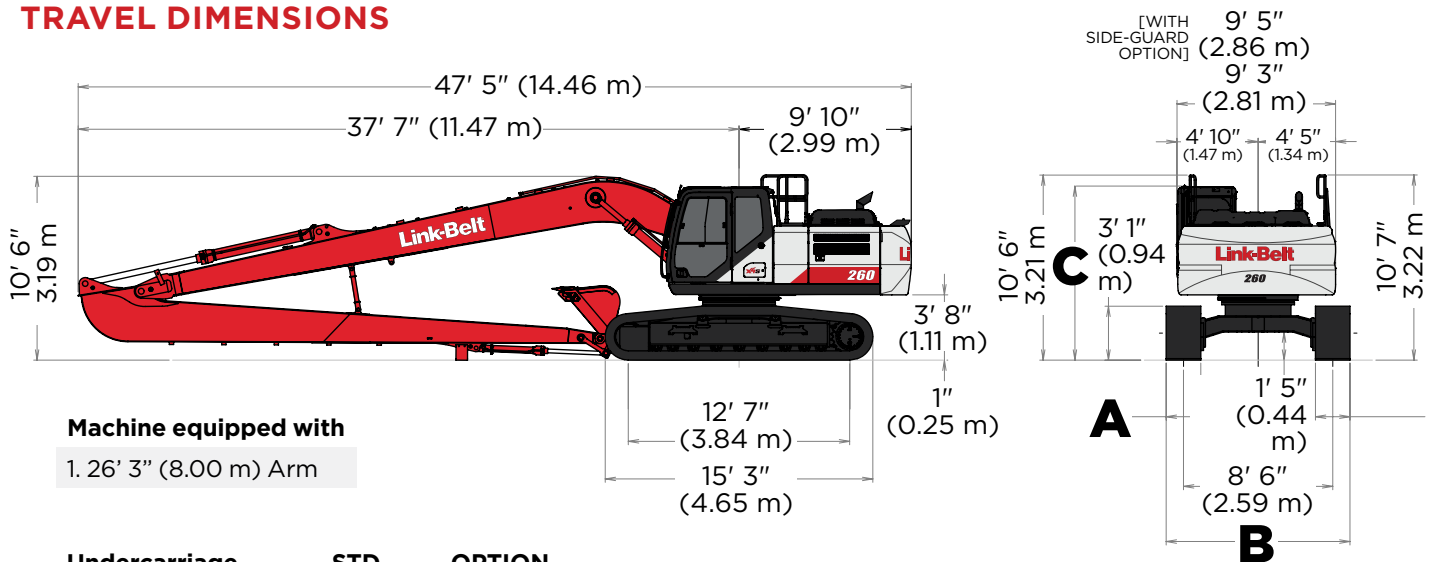
260 X4S LF SPECIFICATIONS

WORKING RANGE



Machine Equipped with 33' 9" (10.3 m) Boom	Arm 26' 3" (8.00 m)
A. Maximum reach	60' 1" (18.32 m)
B. Maximum reach @ ground level	59' 9" (18.22 m)
C. Maximum dig depth	47' 9" (14.56 m)
D. Maximum dig height	45' 9" (13.95 m)
E. Maximum dump height	38' 8" (11.78 m)
F. Digging depth 8' (2.44 m) level bottom	47' 3" (14.41 m)
G. Bucket rotation	178°
H. Maximum vertical wall depth	39' 8" (12.13 m)

TRAVEL DIMENSIONS



Machine equipped with
1. 26' 3" (8.00 m) Arm

Undercarriage	STD	OPTION
A. Shoe Width	31.5" (800 mm)	27.6" (700 mm)
B. Overall Width	11' 2" (3.39 m)	10' 10" (3.29 m)

Cab Specification	C: Cab Height
STD. (No Equipment)	9' 11" (3.02 m)
With Head Guard	10' 3" (3.13 m)
With Vandal Cover	10' 3" (3.13 m)
With Head Guard & Vandal Cover	10' 6" (3.21 m)

260 X4S LF SPECIFICATIONS

LIFT CAPACITIES - RADIUS OF LOAD*

26' 3" (8.00 M) ARM WITH 33' 9" (10.3 M) BOOM WITH POWER-BOOST APPLIED

		0' 0" (0.0 m)		5' 0" (1.5 m)		10' 0" (3.0 m)		15' 0" (4.5 m)		20' 0" (6.0 m)		25' 0" (7.5 m)		30' 0" (9.0 m)	
End	Side	End	Side	End	Side	End	Side	End	Side	End	Side	End	Side	End	Side
10' 0"	lbs					10,550*	10,550*					8,400*	8,400*	7,200*	7,200*
(3.0m)	kg					4,170*	4,170*					3,880*	3,880*	3,320*	3,320*
5' 0"	lbs					3,100*	3,100*	11,250*	11,250*	12,750*	12,750*	9,900*	9,900*	8,200*	8,200*
(1.5m)	kg					1,320*	1,320*	4,770*	4,770*	5,910*	5,910*	4,570*	4,570*	3,780*	3,780*
Ground	lbs					3,100*	3,100*	7,250*	7,250*	14,750*	13,200*	11,200*	9,900*	9,100*	7,750*
Line	kg					1,360*	1,360*	3,160*	3,160*	6,820*	6,100*	5,180*	4,590*	4,210*	3,600*
-5' 0"	lbs			2,800*	2,800*	3,950*	3,950*	6,850*	6,850*	13,200*	12,150*	12,300*	9,150*	9,900*	7,200*
(-1.5m)	kg			1,270*	1,270*	1,760*	1,760*	3,020*	3,020*	5,730*	5,620*	5,670*	4,230*	4,580*	3,340*
-10' 0"	lbs	3,950*	3,950*	4,000*	4,000*	5,050*	5,050*	7,500*	7,500*	14,400*	11,550*	13,050*	8,600*	10,550*	6,800*
(-3.0m)	kg	1,780*	1,780*	1,790*	1,790*	2,250*	2,250*	3,310*	3,310*	5,430*	5,350*	6,030*	4,000*	4,860*	3,150*
-15' 0"	lbs	4,900*	4,900*	5,200*	5,200*	6,300*	6,300*	8,550*	8,550*	12,950*	11,300*	13,400*	8,350*	10,400*	6,550*
(-4.5m)	kg	2,200*	2,200*	2,330*	2,330*	2,800*	2,800*	3,790*	3,790*	5,680*	5,230*	6,230*	3,860*	4,830*	3,030*
-20' 0"	lbs	5,950*	5,950*	6,450*	6,450*	7,650*	7,650*	9,950*	9,950*	14,250*	11,250*	13,300*	8,250*	10,300*	6,400*
(-6.0m)	kg	2,670*	2,670*	2,880*	2,880*	3,410*	3,410*	4,400*	4,400*	6,260*	5,210*	6,180*	3,810*	4,770*	2,970*
-25' 0"	lbs	7,100*	7,100*	7,800*	7,800*	9,150*	9,150*	11,650*	11,650*	16,250*	11,400*	13,350*	8,300*	10,300*	6,400*
(-7.5m)	kg	3,180*	3,180*	3,480*	3,480*	4,070*	4,070*	5,140*	5,140*	7,110*	5,280*	6,200*	3,830*	4,770*	2,980*
-30' 0"	lbs			9,250*	9,250*	10,850*	10,850*	13,700*	13,700*	16,200*	11,700*	12,950*	8,450*	10,450*	6,550*
(-9.0m)	kg			4,120*	4,120*	4,830*	4,830*	6,050*	6,050*	7,500*	5,410*	6,010*	3,920*	4,830*	3,030*
-35' 0"	lbs			10,850*	10,850*	12,850*	12,850*	16,350*	16,350*	14,800*	12,150*	11,950*	8,800*	9,850*	6,850*
(-10.5m)	kg			4,830*	4,830*	5,690*	5,690*	7,170*	7,170*	6,890*	5,620*	5,570*	4,060*	4,610*	3,150*
-40' 0"	lbs					16,000*	16,000*	12,600*	12,600*	12,600*	10,200*	9,350*	8,300*	7,300*	
(-12.0m)	kg					6,720*	6,720*	7,560*	7,560*	5,950*	5,920*	4,830*	4,300*	3,950*	3,350*

		35' 0" (10.5 m)		40' 0" (12.0 m)		45' 0" (13.5 m)		50' 0" (15.0 m)		55' 0" (16.5 m)		Cap At Max. Reach	
End	Side	End	Side	End	Side	End	Side	End	Side	End	Side	End	Side
40' 0"	lbs											3,900*	3,900*
(12.0m)	kg											1,750*	1,750*
35' 0"	lbs					4,300*	4,300*					3,800*	3,800*
(10.5m)	kg					1,950*	1,950*					1,710*	1,710*
30' 0"	lbs					4,350*	4,350*	4,250*	4,250*			3,750*	3,750*
(9.0m)	kg					1,980*	1,980*	2,010*	2,010*			1,690*	1,690*
25' 0"	lbs					4,500*	4,500*	4,500*	4,300*			3,750*	3,750*
(7.5m)	kg					2,050*	2,050*	2,040*	2,010*			1,700*	1,680*
20' 0"	lbs			4,900*	4,900*	4,750*	4,750*	4,650*	4,150*			3,800*	3,400*
(6.0m)	kg			2,240*	2,240*	2,170*	2,170*	2,120*	1,950*	1,850*	1,560*	1,730*	1,530*
15' 0"	lbs	5,700*	5,700*	5,350*	5,350*	5,050*	4,950*	4,850*	4,000*	4,250*	3,200*	3,900*	3,150*
(4.5m)	kg	2,620*	2,620*	2,440*	2,440*	2,310*	2,310*	2,220*	1,880*	2,160*	1,520*	1,770*	1,430*
10' 0"	lbs	6,400*	6,400*	5,800*	5,800*	5,400*	4,700*	5,100*	3,850*	4,850*	3,100*	4,050*	3,000*
(3.0m)	kg	2,940*	2,940*	2,670*	2,670*	2,480*	2,200*	2,340*	1,790*	2,240*	1,460*	1,840*	1,350*
5' 0"	lbs	7,100*	6,750*	6,300*	5,450*	5,750*	4,450*	5,400*	3,650*	4,750*	3,000*	4,250*	2,850*
(1.5m)	kg	3,260*	3,120*	2,910*	2,530*	2,650*	2,070*	2,470*	1,700*	2,220*	1,400*	1,930*	1,300*
Ground	lbs	7,750*	6,250*	6,800*	5,100*	6,150*	4,200*	5,450*	3,450*	4,650*	2,900*	4,500*	2,800*
Line	kg	3,570*	2,900*	3,140*	2,370*	2,820*	1,950*	2,540*	1,620*	2,160*	1,350*	2,050*	1,270*
-5' 0"	lbs	8,350*	5,800*	7,250*	4,800*	6,250*	3,950*	5,300*	3,300*	4,550*	2,800*	4,550*	2,800*
(-1.5m)	kg	3,850*	2,700*	3,350*	2,220*	2,900*	1,850*	2,460*	1,550*	2,110*	1,300*	2,060*	1,270*
-10' 0"	lbs	8,650*	5,500*	7,150*	4,550*	6,050*	3,800*	5,150*	3,200*			4,650*	2,850*
(-3.0m)	kg	4,010*	2,560*	3,330*	2,110*	2,810*	1,770*	2,410*	1,490*			2,100*	1,290*
-15' 0"	lbs	8,400*	5,300*	7,000*	4,400*	5,950*	3,700*	5,100*	3,150*			4,850*	2,950*
(-4.5m)	kg	3,910*	2,460*	3,250*	2,040*	2,750*	1,720*	2,370*	1,460*			2,190*	1,340*
-20' 0"	lbs	8,300*	5,200*	6,900*	4,300*	5,900*	3,650*					5,200*	3,200*
(-6.0m)	kg	3,860*	2,410*	3,210*	2,000*	2,730*	1,690*	2,370*	1,460*			2,340*	1,440*
-25' 0"	lbs	8,300*	5,200*	6,950*	4,350*	5,950*	3,700*					5,700*	3,550*
(-7.5m)	kg	3,850*	2,410*	3,210*	2,000*	2,750*	1,710*					2,560*	1,590*
-30' 0"	lbs	8,450*	5,300*	7,050*	4,450*							6,500*	4,100*
(-9.0m)	kg	3,900*	2,450*	3,270*	2,050*							2,910*	1,830*
-35' 0"	lbs	8,200*	5,550*									7,300*	5,050*
(-10.5m)	kg	3,840*	2,560*									3,280*	2,220*
-40' 0"	lbs											7,700*	6,850*
(-12.0m)	kg											3,470*	2,960*

NOTES: EXCAVATOR LIFTING CAPACITIES

- The lift capacities above are based on the ISO standard, ISO 10567:2007 - "Earthmoving Machinery - Hydraulic Excavators - Lift Capacity"
- Lifting capacities shown should not be exceeded. The weight of all lifting accessories will be deducted from the above lifting capacities. The use of a work tool attachment point as the lift point could affect the machine lift performance.
- Lifting capacities are based on the machine standing on a firm, uniform supporting surface. Users must make allowances for job conditions such as soft or uneven ground.
- Lifting capacities shown do not exceed 75% of the minimum tipping loads or 87% of the hydraulic capacities. Lifting capacities marked with an asterisk (*) are limited by hydraulic capacities.
- The least stable position is lifting over the side.
- Operators should be fully acquainted with the Operator's Manual & Operating Safety Booklet, furnished by LBX Company LLC before operating the machine.
- Lift capacities apply only to the machine as originally manufactured and normally equipped by LBX Company LLC.
- This lift chart is without bucket.

370 X4S LF SPECIFICATIONS



SAE Net Horsepower
268 hp (200 kW)

Operating Weight
88,400 lbs (40,100 kg)

Swing Torque
103,000 lbf-ft (76.0 kNm)

ENGINE

Engine	Isuzu AQ-6HK1X Final Tier 4 turbocharged diesel engine
SAE J 1349 net horsepower	268 HP (200 kW) @ 1900 min-1 (rpm)
Displacement	475 cu in (7.79 L)
Maximum Torque	729 lbf-ft (988 N-m) @ 1500 min-1 (rpm)
Starter	24 V - 5.0 kW
Alternator	90 amp
Voltage	24 V

HYDRAULIC SYSTEM

Hydraulic Pumps

Pump Output	2 x 79.5 gpm (301 L/min)
Pilot Pump Maximum Flow	7.5 gpm (28.5 L/min)

Relief Valve Settings

Boom Up / Arm in Power Boost	4,970 psi (34.3 MPa) 5,410 psi (37.3 MPa)
Bucket	3,840 psi (26.5 MPa)
Boom Down	2,990 psi (20.6 MPa)
Swing Circuit	4,050 psi (27.9 MPa)
Travel Circuit	4,970 psi (34.3 MPa)

Hydraulic Cylinders

Number of Cylinders - Bore x Stroke

Boom	2 - 5.7" x 58.9" (145 mm x 1495 mm)
Arm	5.9" x 68.4" (150 mm x 1737 mm)
Bucket	4.7" x 47.6" (120 mm x 1010 mm)

SWING

Swing Speed	5.5 rpm
Tail Swing	11' 9" (3.58 m)
Swing Torque	76,000 lbf-ft (103.0 kNm)

370 X4S LF SPECIFICATIONS

UNDERCARRIAGE

Carrier Rollers	2 per Side
Track Rollers	8 per Side
Track Link Pitch	8.5" (216 mm)
Shoes	48 per Side
Shoe Width	31.5" (800 mm)
Ground Pressure	8.1 psi (0.056 MPa)

TRAVEL SYSTEM

Travel Speeds	2.1 - 3.5 mph (3.3 - 5.6 km/h)
Drawbar Pull	60,800 lbf (271 kN)
Gradeability	70% (35°)

ATTACHMENT

Boom	35' 5" (10.8 m)
Available Arms	Digging Force
25' 0" (7.63 m)	14,900 lbf (66.2 kN)
in With Auto Power Boost	16,200 lbf (72.0 kN)
Bucket Digging Force	24,500 lbf (109.0 kN)

LUBRICANT AND COOLANT CAPACITY

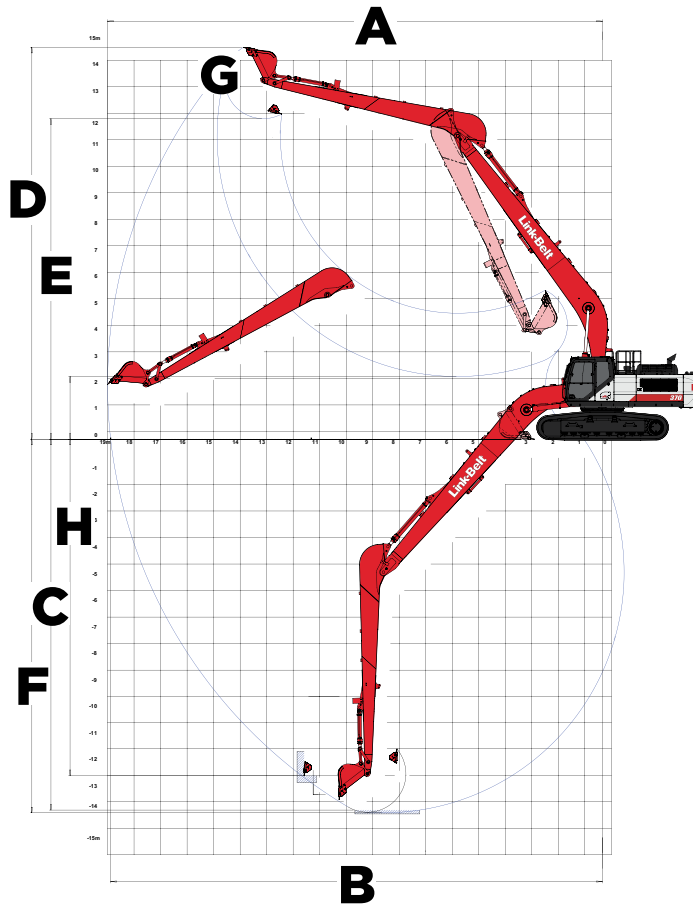
Fuel Tank	153 Gallons (580 Liters)
Hydraulic System	94 Gallons (355 Liters)
Hydraulic Tank	49 Gallons (186 Liters)
Final Drive (per side)	1.7 Gallons (6.5 Liters)
Swing Drive	1.3 Gallons (5.0 Liters)
Engine Oil	12.9 Gallons (48.7 Liters)
DEF Tank	22 Gallons (84 Liters)
Coolant System	10.5 Gallons (39.8 Liters)

OPERATING WEIGHT

Working weight with 31.5" (800 mm) shoes, 35' 5" (10.8 m) boom, 25' 0" (7.63 m) arm, 1,323 lbs (600 kg) bucket, 19,000 lbs (8,600 kg) counterweight	88,400 lbs (40,100 kg)
--	------------------------

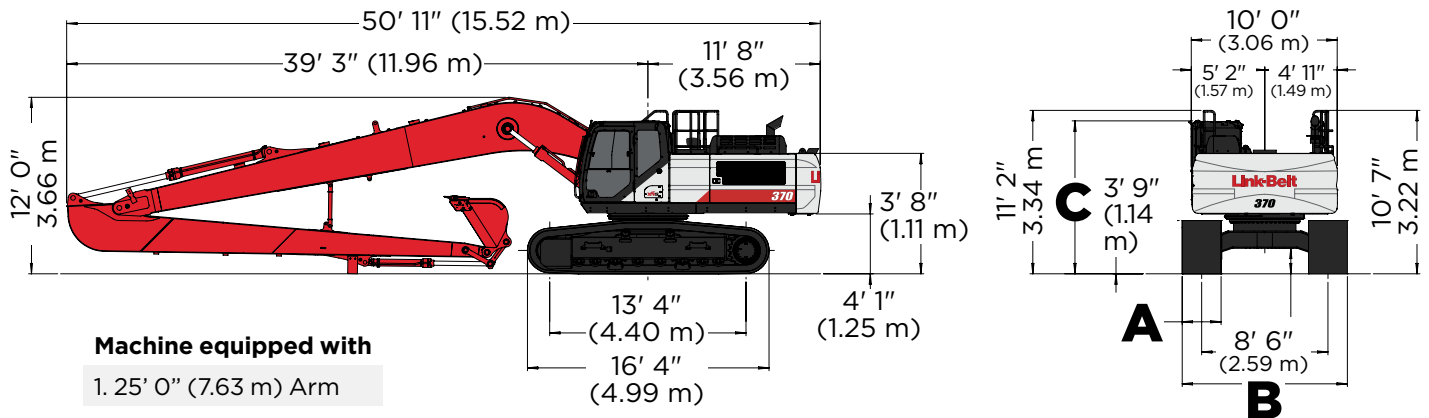
370 X4S LF SPECIFICATIONS

WORKING RANGE



Machine Equipped with 35' 5" (10.8 m) Boom	Arm 25' 0" (7.63 m)
A. Maximum reach	61' 3" (18.66 m)
B. Maximum reach @ ground level	60' 10" (18.54 m)
C. Maximum dig depth	46' 3" (14.09 m)
D. Maximum dig height	48' 6" (14.78 m)
E. Maximum dump height	39' 8" (12.09 m)
F. Digging depth 8' (2.44 m) level bottom	45' 11" (13.99 m)
G. Bucket rotation	177°
H. Maximum vertical wall depth	41' 7" (12.69 m)

TRAVEL DIMENSIONS



370 X4S LF SPECIFICATIONS

LIFT CAPACITIES - RADIUS OF LOAD*

25' 0" (7.63 M) ARM WITH 35' 0" (10.8 M) BOOM WITH POWER-BOOST APPLIED

		5' 0" (1.5 m)		10' 0" (3.0 m)		15' 0" (4.5 m)		20' 0" (6.0 m)		25' 0" (7.5 m)		30' 0" (9.0 m)		35' 0" (10.5 m)	
End	Side	End	Side	End	Side	End	Side	End	Side	End	Side	End	Side	End	Side
15' 0" (4.5m)	lbs kg											10,950*	10,950*	9,700*	9,700*
10' 0" (3.0m)	lbs kg					25,100*	25,100*	18,800*	18,800*	14,700*	14,700*	12,200*	12,200*	10,550*	10,100
5' 0" (1.5m)	lbs kg					12,100*	12,100*	12,100*	12,100*	12,100*	12,100*	12,100*	12,100*	11,650	11,400*
Ground	lbs kg			5,300*	5,300*	10,600*	10,600*	21,800*	17,900	17,850*	13,550	14,400*	10,700	12,100*	8,650
-5' 0" (-1.5m)	lbs kg	6,750*	6,750*	7,550*	7,550*	11,450*	11,450*	19,550*	16,800	18,800*	12,650	15,150*	10,000	12,700*	8,150
-10' 0" (-3.0m)	lbs kg	8,550*	8,550*	9,750*	9,750*	13,100*	13,100*	19,900*	16,300	19,250*	12,100	15,600*	9,550	12,750	7,750
-15' 0" (-4.5m)	lbs kg	10,500*	10,500*	11,950*	11,950*	15,250*	15,250*	21,500*	16,100	19,300*	11,850	15,450	9,250	12,500	7,500
-20' 0" (-6.0m)	lbs kg	12,600*	12,600*	14,350*	14,350*	17,750*	17,750*	23,600*	16,200	18,900*	11,800	15,350	9,150	12,400	7,400
-25' 0" (-7.5m)	lbs kg	14,800*	14,800*	16,850*	16,850*	20,600*	20,600*	22,300*	16,500	18,050*	11,950	14,950*	9,250	12,400	7,450
-30' 0" (-9.0m)	lbs kg			19,650*	19,650*	23,900*	23,900*	20,300*	17,000	16,650*	12,250	13,850*	9,450	11,700*	7,650
-35' 0" (-10.5m)	lbs kg					21,650*	21,650*	17,550*	17,550*	14,500*	12,750	12,100*	9,900	10,000*	8,050
-40' 0" (-12.0m)	lbs kg							13,550*	13,550*	11,300*	11,300*	9,200*	9,200*		

		40' 0" (12.0 m)		45' 0" (13.5 m)		50' 0" (15.0 m)		55' 0" (16.5 m)		Cap At Max. Reach	
End	Side	End	Side	End	Side	End	Side	End	Side	End	Side
40' 0" (12.0m)	lbs kg			3,050*	3,050*					2,700*	2,700*
35' 0" (10.5m)	lbs kg			4,700*	4,700*					2,650*	2,650*
30' 0" (9.0m)	lbs kg			5,800*	5,800*	3,600*	3,600*			2,600*	2,600*
25' 0" (7.5m)	lbs kg	7,750*	7,750*	6,750*	6,750*	4,850*	4,850*			2,650*	2,650*
20' 0" (6.0m)	lbs kg	8,200*	8,200*	7,700*	7,350	5,850*	5,850*			2,700*	2,700*
15' 0" (4.5m)	lbs kg	8,800*	8,650	8,100*	7,000	6,800*	5,700	3,550*	3,550*	2,800*	2,800*
10' 0" (3.0m)	lbs kg	9,400*	8,150	8,500*	6,600	7,750*	5,400	4,200*	4,200*	2,900*	2,900*
5' 0" (1.5m)	lbs kg	9,950*	7,600	8,950*	6,250	8,150*	5,150	4,600*	4,250	3,100*	3,100*
Ground	lbs kg	10,500*	7,100	9,350*	5,900	8,050	4,900	4,550*	4,100	3,350*	3,350*
-5' 0" (-1.5m)	lbs kg	10,900	6,700	9,200	5,600	7,850	4,700	3,950*	3,950*	3,700*	3,700*
-10' 0" (-3.0m)	lbs kg	10,600	6,400	8,950	5,400	7,650	4,550			4,150*	4,050
-15' 0" (-4.5m)	lbs kg	10,400	6,200	8,800	5,250	7,600	4,500			4,750*	4,200
-20' 0" (-6.0m)	lbs kg	10,300	6,150	8,750	5,200					5,600*	4,550
-25' 0" (-7.5m)	lbs kg	10,350	6,200	8,850	5,300					6,950*	5,050
-30' 0" (-9.0m)	lbs kg	9,800*	6,400							8,800*	5,900
-35' 0" (-10.5m)	lbs kg									8,900*	7,300
-40' 0" (-12.0m)	lbs kg									8,650*	8,650*

NOTES: EXCAVATOR LIFTING CAPACITIES

- The lift capacities above are based on the ISO standard, ISO 10567:2007 "Earthmoving Machinery - Hydraulic Excavators - Lift Capacity"
- Lifting capacities shown should not be exceeded. The weight of all lifting accessories must be deducted from the above lifting capacities. The use of a work tool attachment point as the lift point could affect the machine lift performance.
- Lifting capacities are based on the machine standing on a firm, uniform supporting surface. Users must make allowances for job conditions such as soft or uneven ground.
- Lifting capacities shown do not exceed 75% of the minimum tipping loads or 87% of the hydraulic capacities. Lifting capacities marked with an asterisk (*) are limited by hydraulic capacities.
- The least stable position is lifting over the side.
- Operators should be fully acquainted with the Operator's Manual & Operating Safety Booklet, furnished by LBX Company LLC before operating the machine.
- Lift capacities apply only to the machine as originally manufactured and normally equipped by LBX Company LLC.
- This lift chart is without bucket.

LONG FRONT SPECIFICATIONS

STANDARD EQUIPMENT

CAB

- 270° WAVES 3-Camera System
- 12V Power Outlet
- AM/FM Sound System
- Anti-Theft Device
- Auxiliary Switches on Control Lever
- Bluetooth
- Cab Air Filter - External
- Cab Handrails
- Cab Interior Light
- Cab ISO-Mounts
- LED Cab Lights
- Clear Roof Window
- Climate Control A/C and Heater
- Cup Holder (2)
- Defroster
- Digital Clock
- Emergency Exit and Hammer
- Face Vent
- Floor Mat (Split)
- Front Window One-Touch Lock
- Gate Lock Hydraulic Activation
- Horn
- Hour Meter (Digital)
- LCD 10" Color Monitor
- Maintenance Interval Reminders
- MP3 Auxiliary Input
- On-Board Diagnostic
- Radio Mute Switch
- Rear View Camera
- Rear View Mirrors (2)
- RemoteCARE Support System (GPS)
- Roof Sun Shade
- ROPS/FOPS Level 1 Certified Structure
- Safety Glass Windows
- SCM Air-Suspension Seat with Tilt & Heater
- Seat Recline
- Selectable Monitor Languages
- Side View Cameras (2)

- Small Storage
- Smart Phone Tray
- Travel Alarm with Cancel Switch
- Trip Meter (Digital)
- Wiper & Washer
- Wiper Switch on RH Joystick

ENGINE

- 85A Alternator
- Air Filter (Double Element)
- Air Filter Restriction Indicator
- Air Pre-Cleaner
- Auto Warm-Up System
- Auto-Idle
- Auto-Idle Shutdown
- Battery Disconnect Switch w/ LED Light
- Cooling Fan
- DEF Gauge on Monitor
- Diesel Oxidation Catalyst (DOC)
- Drain for Fuel Tank
- Dual Remote Fuel Filters with Water Separators
- EGR Coolers
- Emergency Engine Stop
- Engine Oil Sample Port
- Engine Protection Feature
- External Fuel Gauge
- External DEF Gauge
- Fan Belt Auto Tensioner
- Fan Housing
- Fuel Cooler
- Fuel Filter Restriction Indicator
- Fuel Management System
- Fuel Usage History
- Fuel Usage Monitor
- Glow Plug Pre-Heat
- Idle-Start
- Intercooler
- Neutral Start

- One-Touch Idle
- Radiator / Oil Cooler / Intercooler Protective Screens
- Remote Engine Oil Drain
- Remote Oil Filter
- Selective Catalytic Reduction (SCR)
- Variable Geometry Turbocharger

HYDRAULICS

- Anti-drift valves (Arm & Boom)
- Arm Regeneration
- Arm Speed Assistance (2 Pump Flow)
- Attachment Cushion Valve
- Auto Swing Priority
- Custom Flow Control
- Auxiliary Tool Settings (Custom Naming)
- Auxiliary Valve
- Boom Regeneration
- Boom Speed Assistance (2 Pump Flow)
- Bucket Curl Assist
- Control Levers Pre-Wired for Auxiliary Hyd.
- Pattern Control Valve (2 way)
- Electronically Controlled Hydraulic Pumps
- Fire Wall
- Free Swing
- Hydraulic Filter Restriction Indicator
- Hydraulic Oil Sample Port
- Long Life Hydraulic Oil (5,000 Hour)
- Neutral Pump De-Stroke
- Oil Cooler
- Power Boost
- Power Save
- Pressure Reading on Monitor

- Pump Stand-By Pressure

UNDERCARRIAGE

- 800 mm shoes (31.5 in) 3-Bar Steel
- Extended Steps
- Lashing Points (Tie-Downs)
- Sealed Link Chain
- Single Track Guide
- Strutted Track Chain
- Swivel Guard

UPPERSTRUCTURE

- Counterweight
- **220 X4S Long Front** 10,360 lbs (4,700 kg)
- **260 X4S Long Front** 16,200 lbs (7,350 kg)
- **370 X4S Long Front** 19,000 lbs (8,600 kg)
- Center Cover (Over Main CV)
- Fuel Tank Belly Pan
- ISO Guard Rails
- LED Tool Box Light
- Lockable Fuel Cap and Service Doors
- Lockable Hydraulic Oil Tank Cap
- Lockable Engine Hood
- Lockable Tool Box

ATTACHMENT

- **220 X4S Long Front** 21' 0" (6.4 m) arm 28' 7" (8.7 m) boom
- **260 X4S Long Front** 26' 3" (8.0 m) arm 33' 9" (10.3 m) boom
- **370 X4S Long Front** 25' 0" (7.63 m) arm 35' 5" (10.8 m) boom
- Chrome Pins
- Bucket Linkage
- LED Boom Light
- Teardrop Pin Retention Keepers

LONG FRONT SPECIFICATIONS

OPTIONAL EQUIPMENT

CAB

- 270° WAVES+ 3-Camera System
- Cab Sun Visor (Front)
- CAB Head Guard (FOPS Level 2)
- Front Guard (Mesh)
- Front Guard (BAR - OPG Level 1)
- Front Guard (BAR - OPG Level 2)
- LED Lights for WAVES Cameras (4)
- Rain Deflector
- Vandal Cover (DIA Kit)

PRECISION GRADE

- 2D Machine Guidance
- 2D Submersible Linkage Kit

ENGINE

220 X4S & 260 X4S

Long Front

- Reversible Cooling Fan
- Tropical Package

HYDRAULICS

220 X4S & 260 X4S

Long Front

- Hose Burst Check Valve

AUXILIARY HYDRAULIC OPTIONS

- Secondary Aux. w/ Proportional Joysticks

UNDERCARRIAGE

- 700 mm shoes (27.5 in) 3-Bar Steel

220 X4S

Long Front

- 600 mm shoes (23.6 in) 3-Bar Steel

220 X4S & 260 X4S

Long Front

- Triple Track Guards

370 X4S

Long Front

- Full Length Track Guards

BUCKET SIZES



Scan the QR code to find the right size bucket, thumb, and coupler combination for the 220, 260, and 370 X4S Long Front.

Or visit qrco.de/bfJNu2





Link-Belt[®]

EXCAVATORS

LBX Company
lbxco.com

For more information
- including a digital
version of this brochure
- scan the QR code.



#LBX2538 · 1/25

LBX[®] and Link-Belt[®] are registered trademarks. Copyright 2025. All rights reserved. We are constantly improving our products and therefore reserve the right to change designs and specifications.